



Donald Ross  
SPORTSWEAR

SPRING | SUMMER  
2024 Catalog



# Donald Ross

SPORTSWEAR

## TABLE OF CONTENTS

CLASSIC FIT GUIDE | 3

CLASSIC PATRIOTIC COLLECTION | 4 - 6

CLASSIC KNIT SHIRTS | 7 - 13

CLASSIC LONG SLEEVE SHIRTS | 14

CLASSIC WOVENS | 15

CLASSIC LAYERS | 16 - 18

BOTTOMS | 19

CLASSIC COLOR STORIES | 20 - 23

ORDER/LOGO NOTES | 24

**Green Grass Site:**

[www.donaldross.com/green-grass/](http://www.donaldross.com/green-grass/)

**Customer Service:**

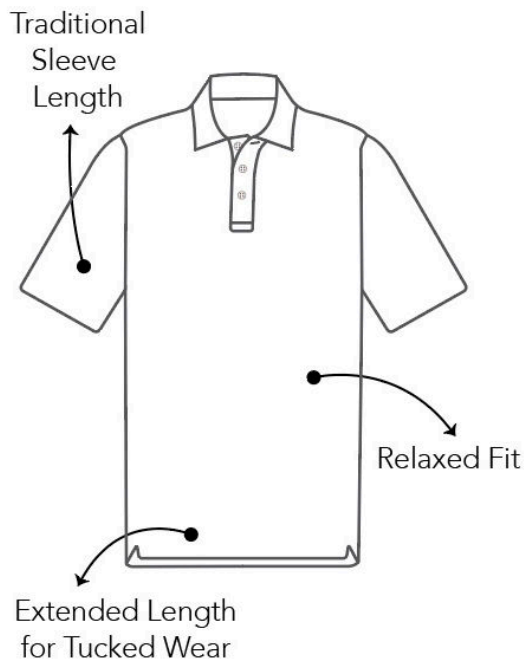
Phone: 910-944-3114

Email: [customerservice@donaldross.com](mailto:customerservice@donaldross.com)

## Classic Fit

Classic garments offer a generous shape through the body with traditional sleeve length. Fit for those who enjoy a slightly oversized, looser fit.

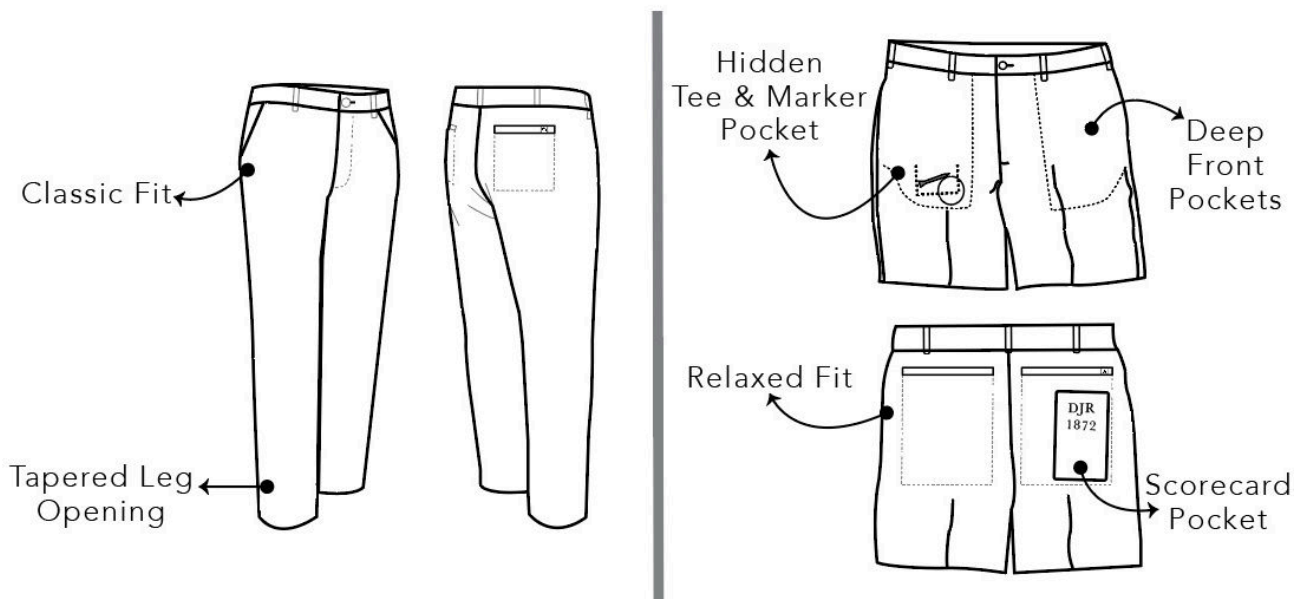
	Weight (lbs)	Sport Coat Size
Small	150-170	38-40
Medium	170-195	40-42
Large	195-225	43-46
X-Large	225-260	47-50
XX-Large	260-280	52-54
XXX-Large	280+	54+



## Bottoms

Pant Inseam Options 30 & 32

<i>Pants</i>	32	X	34	X	36	38	40	42	44
<i>Shorts</i>	32	33	34	35	36	38	40	42	44





**LAMAR | DRSTSD-MSP**

Short sleeve **jersey** featuring a space dye feeder stripe with a classic three-button placket and spread collar. [ST0535]



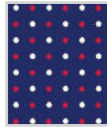
100  
WHITE MULTI

SKU	S	M	L	XL	2XL	3XL
DRSTSD-MSP-100						



**OMAHA | DRPDOT-MSP**

Short sleeve **jersey** featuring a dots print with a classic three-button placket and spread collar. [PR0565]



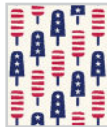
400  
NAVY MULTI

SKU	S	M	L	XL	2XL	3XL
DRPDOT-MSP-400						



**HYDE | DRPPOP-MSP**

Short sleeve **jersey** featuring a popsicles print with a classic three-button placket and spread collar. [PR0565]



100  
WHITE MULTI

SKU	S	M	L	XL	2XL	3XL
DRPPOP-MSP-100						



**HOPE | DRPRIB-MSP**

Short sleeve **jersey** featuring a ribbons print with a classic three-button placket and spread collar. [PR0565]



400  
NAVY MULTI

SKU	S	M	L	XL	2XL	3XL
DRPRIB-MSP-400						



**MASON | DRPSAM-MSP**

Short sleeve **jersey** featuring an Uncle Sam's hat print with a classic three-button placket and spread collar. [PR0565]



400  
NAVY MULTI

SKU	S	M	L	XL	2XL	3XL
DRPSAM-MSP-400						



**MORELAND | DRPBEER-MSP**

Short sleeve **jersey** featuring a beer can print with a classic three-button placket and spread collar. [PR0565]



400  
NAVY MULTI



506  
RED MULTI

SKU	S	M	L	XL	2XL	3XL
DRPBEER-MSP-400						
DRPBEER-MSP-506						



**PT. PLEASANT | DRPCFLAG-MSP**

Short sleeve jersey featuring a crossing flags print with a classic three-button placket and spread collar. [PR0565]



100  
WHITE MULTI



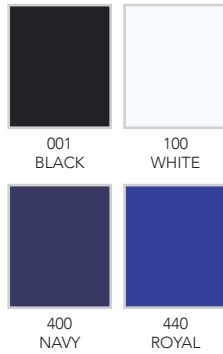
400  
NAVY MULTI

SKU	S	M	L	XL	2XL	3XL
DRPCFLAG-MSP-100						
DRPCFLAG-MSP-400						



**DR016SC-MSP**

Short sleeve solid **baby pique** features a classic three-button placket and self-collar. [SL0525]

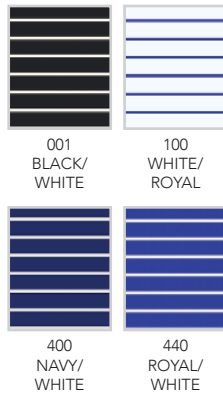


SKU	S	M	L	XL	2XL	3XL
DR016SC-MSP-001						
DR016SC-MSP-100						
DR016SC-MSP-400						
DR016SC-MSP-440						



**DR7569-MSP**

Short sleeve **jersey** featuring a pencil stripe with classic three-button placket and self-collar. [ST0535]

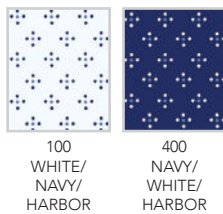


SKU	S	M	L	XL	2XL	3XL
DR7569-MSP-001						
DR7569-MSP-100						
DR7569-MSP-400						
DR7569-MSP-440						



**DRP039-MSP**

Short sleeve **jersey** featuring a neat foulard print with a classic three-button placket and self-collar. [PR0565]



SKU	S	M	L	XL	2XL	3XL
DRP039-MSP-100						
DRP039-MSP-400						





**BOSTON | DR076M-124**

Short sleeve solid **mélange jersey** features a classic three-button placket and spread collar. [SL0525]



SKU	S	M	L	XL	2XL	3XL
DR076M-124-001						
DR076M-124-044						
DR076M-124-380						
DR076M-124-400						
DR076M-124-450						
DR076M-124-610						
DR076M-124-642						



**NANTUCKET | DR151-124**

Short sleeve **jersey** featuring a mélangé shadow stripe with a classic three-button placket and spread collar. [ST0535]



SKU	S	M	L	XL	2XL	3XL
DR151-124-001						
DR151-124-100						
DR151A-124-100						
DR151B-124-100						
DR151-124-380						
DR151-124-400						
DR151-124-450						
DR151-124-610						
DR151-124-642						





**NASHVILLE | DR247-124**

Short sleeve **jersey** featuring a multi stripe with a classic three-button placket and spread collar. [ST0535]



100  
WHITE  
MULTI

450  
COBALT  
MULTI

642  
JUNIPER  
MULTI

SKU	S	M	L	XL	2XL
DR247-124-100					
DR247-124-450					
DR247-124-642					



**DARTMOUTH | DRP081-124**

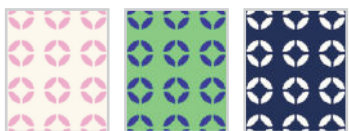
Short sleeve **jersey** featuring a zegna circle print with a classic three-button placket and spread collar. [PR0565]



001  
BLACK/  
PINK

100  
WHITE/  
NAVY

100A  
WHITE/  
COBALT



100B  
WHITE/  
PINK

380  
BERMUDA/  
COBALT

400  
NAVY/  
WHITE



450  
COBALT/  
BERMUDA

SKU	S	M	L	XL	2XL	3XL
DRP081-124-001						
DRP081-124-100						
DRP081A-124-100						
DRP081B-124-100						
DRP081-124-380						
DRP081-124-400						
DRP081-124-450						



**ATLANTA | DRP082-124**

Short sleeve **jersey** featuring a flames print with a classic three-button placket and spread collar. [PR0565]



100  
WHITE/  
BLACK

100A  
WHITE/  
COBALT

400  
NAVY/  
WHITE



450  
COBALT/  
WHITE

642  
JUNIPER/  
WHITE

SKU	S	M	L	XL	2XL	3XL
DRP082-124-100						
DRP082A-124-100						
DRP082-124-400						
DRP082-124-450						
DRP082-124-642						



**SARASOTA | DRP083-124**

Short sleeve **jersey** featuring a peppers print with a classic three-button placket and spread collar. [PR0565]



001  
BLACK/  
PINK

044  
SLATE/  
BLACK

100  
WHITE/  
NAVY



380  
BERMUDA/  
COBALT

450  
COBALT/  
WHITE

SKU	S	M	L	XL	2XL
DRP083-124-001					
DRP083-124-044					
DRP083-124-100					
DRP083-124-380					
DRP083-124-450					

**BOCA | DRP084-124**

Short sleeve jersey featuring a paisley print with a classic three-button placket and spread collar. [PR0565]



100  
WHITE/  
BERMUDA/  
COBALT



100A  
WHITE/  
PINK/  
BLACK



400  
NAVY/  
WHITE/  
JUNIPER

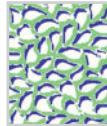
SKU	S	M	L	XL	2XL
DRP084-124-100					
DRP084A-124-100					
DRP084-124-400					

**WINCHESTER | DRP085-124**

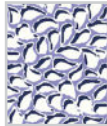
Short sleeve jersey featuring a water drops print with a classic three-button placket and spread collar. [PR0565]



044  
SLATE  
MULTI



380  
BERMUDA  
MULTI



642  
JUNIPER  
MULTI

SKU	S	M	L	XL	2XL	3XL
DRP085-124-044						
DRP085-124-380						
DRP085-124-642						



**CHICAGO | DRP086-124**

Short sleeve **mélange jersey** featuring a dog walker print with a classic three-button placket and spread collar. [PR0565]



044  
SLATE/  
BLACK



100  
WHITE/  
COBALT



100A  
WHITE/  
NAVY



400  
NAVY/  
WHITE



450  
COBALT/  
BERMUDA



610  
PINK/  
BLACK



642  
JUNIPER/  
NAVY

SKU	S	M	L	XL	2XL
DRP086-124-044					
DRP086-124-100					
DRP086A-124-100					
DRP086-124-400					
DRP086-124-450					
DRP086-124-610					
DRP086-124-642					



**MIAMI | DRP087-124**

Short sleeve **jersey** featuring a toucan print with a classic three-button placket and spread collar. [PR0565]



001  
BLACK  
MULTI



100  
WHITE/  
NAVY  
MULTI



100A  
WHITE/  
COBALT  
MULTI



610  
PINK  
MULTI



642  
JUNIPER  
MULTI

SKU	S	M	L	XL	2XL	3XL
DRP087-124-001						
DRP087-124-100						
DRP087A-124-100						
DRP087-124-610						
DRP087-124-642						



**ATHENS | DRP088-124**

Short sleeve jersey featuring a safari print with a classic three-button placket and spread collar. [PR0565]



100  
WHITE/  
BLACK

400  
NAVY/  
WHITE

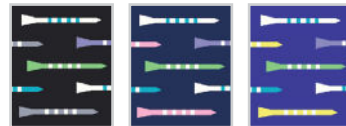
450  
COBALT/  
WHITE

SKU	S	M	L	XL	2XL	3XL
DRP088-124-100						
DRP088-124-400						
DRP088-124-450						



**CHARLOTTE | DRP089-124**

Short sleeve jersey featuring a striped tees print with a classic three-button placket and spread collar. [PR0565]



001  
BLACK  
MULTI

400  
NAVY  
MULTI

450  
COBALT  
MULTI

SKU	S	M	L	XL	2XL	3XL
DRP089-124-001						
DRP089-124-400						
DRP089-124-450						





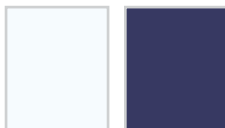
**DR157-MSP**

Long sleeve solid **jersey** mock neck layering shirt with ribbed cuffs and neck. [LS0575]



001  
BLACK

056  
STEEL GREY



100  
WHITE

400  
NAVY

SKU	S	M	L	XL	2XL	3XL
DR157-MSP-001						
DR157-MSP-056						
DR157-MSP-100						
DR157-MSP-400						



**DR159-MSP**

Long sleeve solid **jersey** features a classic three-button placket, self-collared, and ribbed cuffs. [LS0595]



001  
BLACK

056  
STEEL GREY

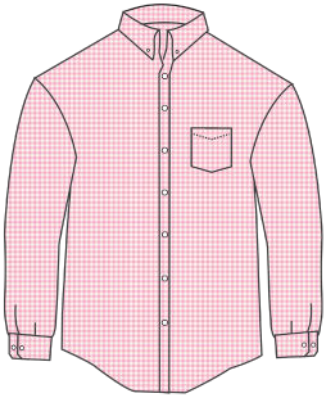
100  
WHITE



400  
NAVY

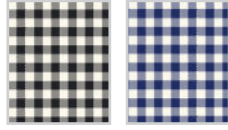
465  
STEEL BLUE

SKU	S	M	L	XL	2XL	3XL
DR159-MSP-001						
DR159-MSP-056						
DR159-MSP-100						
DR159-MSP-400						
DR159-MSP-465						



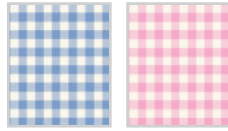
**DR605-MSP**

Donald Ross woven shirts are constructed from a nylon/spandex blend for comfort and mobility, with a gingham check print. Features long sleeves, traditional eight-button front, two-button adjustable cuffs, and button down collar. [WV0576]



001  
BLACK/  
WHITE

400  
NAVY/  
WHITE



420  
SKY/  
WHITE

610  
PINK/  
WHITE

SKU	S	M	L	XL	2XL
DR605-MSP-001					
DR605-MSP-400					
DR605-MSP-420					
DR605-MSP-610					





**PARKLAND PULLOVER | DR2001LS-MSP**

Long sleeve lightweight solid 1/2 zip pullover features set-in sleeve construction, storm flap, as well as self-fabric banded cuffs and waistband. Model is constructed with a poly blend fabric that offers four-way stretch to provide all day comfort. [LR0056]

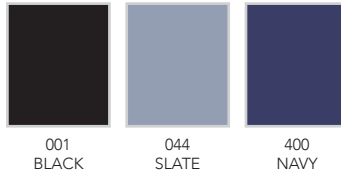


SKU	S	M	L	XL	2XL	3XL
DR2001LS-MSP-001						
DR2001LS-MSP-008						
DR2001LS-MSP-400						
DR2001LS-MSP-440						

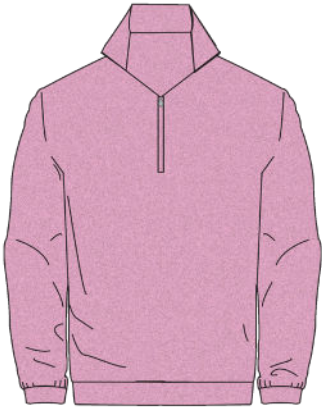


**DUNBAR PULLOVER | DR2316-124**

Long sleeve ultra lightweight 1/2 zip pullover constructed from a polyester-spandex blend that offers full four-way stretch, DWR protection, and quick dry qualities. Model features lower front pockets, logoed storm flap, rubber thistle logo on back collar, and draw string closure bottom. [LR00021]



SKU	S	M	L	XL	2XL
DR2316-124-001					
DR2316-124-044					
DR2316-124-400					



**FALKIRK PULLOVER | DR336LS-124**

Long-sleeve mid-weight 1/2 zip pullover constructed with a polyester-spandex blend that offers four-way stretch and breathable warmth. Model features set-in sleeve construction, a rubber thistle logo on the back collar, as well as banded cuffs & bottom. [LR0576]



095  
HEATHER  
GREY



100  
WHITE



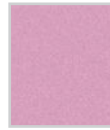
380  
HEATHER  
BERMUDA



400  
HEATHER-  
NAVY



450  
HEATHER  
COBALT



610  
HEATHER  
PINK



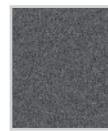
642  
HEATHER  
JUNIPER

SKU	S	M	L	XL	2XL
DR336LS-124-095					
DR336LS-124-100					
DR336LS-124-380					
DR336LS-124-400					
DR336LS-124-450					
DR336LS-124-610					
DR336LS-124-642					

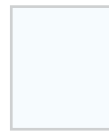


**FALKIRK VEST | DR336V-124**

Sleeveless mid-weight 1/2 zip vest constructed with a polyester-spandex blend that offers four-way stretch and breathable warmth. Model features a rubber thistle logo on the back collar, as well as a banded bottom. [LR0575]



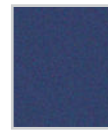
095  
HEATHER  
GREY



100  
WHITE



380  
HEATHER  
BERMUDA



400  
HEATHER  
NAVY



450  
HEATHER  
COBALT



642  
HEATHER  
JUNIPER

SKU	S	M	L	XL	2XL
DR336V-124-095					
DR336V-124-100					
DR336V-124-380					
DR336V-124-400					
DR336V-124-450					
DR336V-124-642					

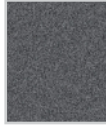


**THE YEAR ROUNDER HOODIE | DR402-124**

Long sleeve hoodie pullover constructed with our signature lightweight performance fleece. Model features dual colored cord strings, kangaroo pocket, embroidered thistle logo on right wrist, as well as banded cuffs and waistband. [LR0057]



001  
BLACK



095  
HEATHER  
GREY



450  
HEATHER  
COBALT



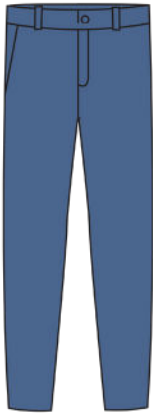
642  
HEATHER  
JUNIPER

SKU	S	M	L	XL	2XL
DR402-124-001					
DR402-124-095					
DR402-124-450					
DR402-124-642					



**THE WALKER II | DR702-MSP**

Flat front solid, performance walk shorts. Constructed of "Thistle Stretch" fabric that delivers breathable four-way stretch with quick dry properties. Engineered with 8.5" inseam, deep front pockets, hidden coin pocket, and scorecard back pocket. [BT0045]



**FLAT FRONT PERFORMANCE PANTS | DR752-MSP**

Constructed of "Thistle Stretch" fabric that delivers breathable four-way stretch with quick dry properties. Designed with **flat front** styling, a comfortable modern fit, and the ideal weight for all weather conditions. [BT0047]



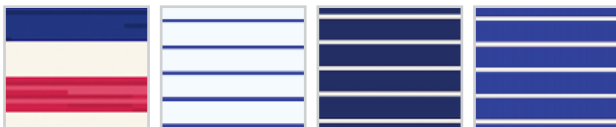
PATRIOTIC

SOLID



DR016SC-MSP-100 DR157-MSP-100 DR159-MSP-100 WHITE  
 DR016SC-MSP-400 DR157-MSP-400 DR159-MSP-400 NAVY  
 DR016SC-MSP-440 ROYAL  
 DR076M-124-044 SLATE  
 DR076M-124-400 NAVY  
 DR076M-124-450 COBALT  
 DR157-MSP-056 DR159-MSP-056 STEEL GREY  
 DR159-MSP-465 STEEL BLUE

STRIPES



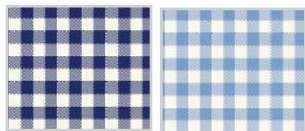
DRSTSD-MSP-100 WHITE MULTI  
 DR7569-MSP-100 WHITE/ROYAL  
 DR7569-MSP-400 NAVY/WHITE  
 DR7569-MSP-440 ROYAL/WHITE

PRINTS



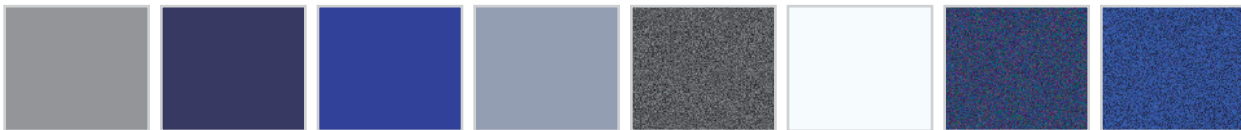
DRPDOT-MSP-400 NAVY MULTI  
 DRPPOP-MSP-100 WHITE MULTI  
 DRPRIB-MSP-400 NAVY MULTI  
 DRPSAM-MSP-400 NAVY MULTI  
 DRPBEER-MSP-400 NAVY MULTI  
 DRPBEER-MSP-506 RED MULTI  
 DRPCFLAG-MSP-100 WHITE MULTI  
 DRPCFLAG-MSP-400 NAVY MULTI  
 DRP039-MSP-100 WHITE/NAVY/HARBOR  
 DRP039-MSP-400 NAVY/WHITE/HARBOR  
 DRP081-124-100 WHITE/NAVY  
 DRP081A-124-100 WHITE/COBALT  
 DRP081-124-400 NAVY/WHITE  
 DRP082A-124-100 WHITE/COBALT  
 DRP082-124-400 NAVY/WHITE  
 DRP082-124-450 COBALT/WHITE  
 DRP083-124-100 WHITE/NAVY  
 DRP083-124-450 COBALT/WHITE  
 DRP086-124-100 WHITE/NAVY  
 DRP086A-124-100 WHITE/COBALT  
 DRP086-124-400 NAVY/WHITE  
 DRP087A-124-100 WHITE/COBALT MULTI  
 DRP088-124-400 NAVY/WHITE  
 DRP088-124-450 COBALT/WHITE

WOVENS



DR605-MSP-400 NAVY/WHITE  
 DR605-MSP-420 SKY/WHITE

LAYERS



DR2001LS-MSP-008 GRANITE  
 DR2001LS-MSP-400 DR2316-124-400 NAVY  
 DR2001LS-MSP-440 ROYAL  
 DR2316-124-044 SLATE  
 DR336LS-124-095 DR336V-124-095 DR402-124-095 HEATHER GREY  
 DR336LS-124-100 DR336V-124-100 WHITE  
 DR336LS-124-400 DR336V-124-400 HEATHER NAVY  
 DR336LS-124-450 DR336V-124-450 DR402-124-450 HEATHER COBALT

BLACK | WHITE | SLATE | PINK

SOLID



DR016SC-MSP-001  
DR076M-124-001  
DR157-MSP-001  
DR159-MSP-001  
BLACK

DR016SC-MSP-100  
DR157-MSP-100  
DR159-MSP-100  
WHITE

DR076M-124-044  
SLATE

DR076M-124-610  
PINK

DR157-MSP-056  
DR159-MSP-056  
STEEL GREY

STRIPES



DR7569-MSP-001  
BLACK/WHITE

DR151-124-001  
BLACK/WHITE/  
PINK

DR151B-124-100  
WHITE/PINK/  
BLACK

DR151-124-610  
PINK/WHITE/  
BLACK

DR247-124-100  
WHITE MULTI

PRINTS



DRP081-124-001  
BLACK/PINK

DRP081B-124-100  
PINK/WHITE

DRP082-124-001  
BLACK/WHITE

DRP083-124-001  
BLACK/PINK

DRP083-124-044  
SLATE/BLACK

DRP084A-124-100  
WHITE/PINK/  
BLACK

DRP085-124-044  
SLATE MULTI



DRP086-124-044  
SLATE/BLACK

DRP086-124-610  
PINK/BLACK

DRP087-124-001  
BLACK MULTI

DRP087-124-610  
PINK MULTI

DRP088-124-100  
WHITE/BLACK

DRP089-124-001  
BLACK MULTI

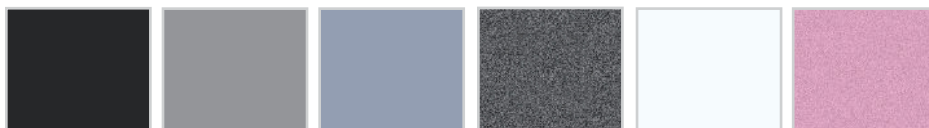
WOVENS



DR605-MSP-001  
BLACK/WHITE

DR605-MSP-610  
PINK/WHITE

LAYERS



DR2001LS-MSP-001  
DR2316-124-001  
DR402-124-001  
BLACK

DR2001LS-MSP-008  
GRANITE

DR2316-124-044  
SLATE

DR336LS-124-095  
DR336V-124-095  
DR402-124-095  
HEATHER GREY

DR336LS-124-100  
DR336V-124-100  
WHITE

DR336LS-124-610  
HEATHER PINK





SOLID



DR016SC-MSP-100  
DR157-MSP-100  
DR159-MSP-100  
WHITE

DR016SC-MSP-440  
ROYAL

DR076M-124-380  
BERMUDA

DR076M-124-450  
COBALT

STRIPES



DR7569-MSP-100  
WHITE/ROYAL

DR7569-MSP-440  
ROYAL/WHITE

DR151-124-100  
WHITE/COBALT/  
BERMUDA

DR151-124-380  
BERMUDA/WHITE/  
COBALT

DR151-124-450  
COBALT/WHITE/  
BERMUDA

DR247-124-450  
COBALT MULTI

PRINTS



DRP081A-124-100  
WHITE/COBALT

DRP081-124-380  
BERMUDA/COBALT

DRP081-124-450  
COBALT/BERMUDA

DRP082A-124-100  
WHITE/COBALT

DRP082-124-450  
COBALT/WHITE

DRP083-124-380  
BERMUDA/COBALT

DRP083-124-450  
COBALT/WHITE



DRP084-124-100  
WHITE/BERMUDA/  
COBALT

DRP085-124-380  
BERMUDA MULTI

DRP086A-124-100  
WHITE/COBALT

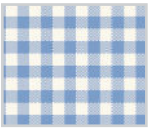
DRP086-124-450  
COBALT/BERMUDA

DRP087A-124-100  
WHITE/COBALT  
MULTI

DRP088-124-450  
COBALT/WHITE

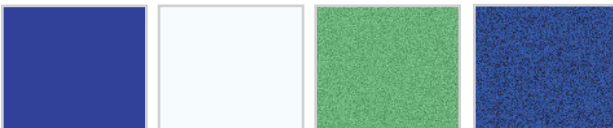
DRP089-124-450  
COBALT MULTI

WOVENS



DR605-MSP-420  
SKY/WHITE

LAYERS



DR2001LS-MSP-440  
ROYAL

DR336LS-124-100  
DR336V-124-100  
WHITE

DR336LS-124-380  
DR336V-124-380  
HEATHER  
BERMUDA

DR336LS-124-450  
DR336V-124-450  
DR402-124-450  
HEATHER  
COBALT

## Order / Logo Notes:

### Logo Placement Options:

- Left Chest
- Left Sleeve
- Left Collar
- Right Chest
- Right Sleeve
- Right Collar
- Yoke
- No Logo

### Logo Colorway Options:

- Color Coordinate
- Club Colors
- Tonal Light
- Tonal Dark
- Contrast
- Tone on Tone

For more information visit: [www.donaldross.com/green-grass/](http://www.donaldross.com/green-grass/)

Contact your sales representative or contact customer service

Via Phone: 910-944-3114

Via Email: [customerservice@donaldross.com](mailto:customerservice@donaldross.com)