

The image features a central dark green square with a white border. Inside this square, the text is centered. The background is white with decorative pine branches in various shades of green (dark, medium, and light) extending from the corners towards the center. Two thin, vertical light green lines run parallel to the left and right sides of the central square.

DONALD ROSS

Fall | Winter 2022

*Holiday Collection*



**DRP071H-123:**

Short sleeve jersey featuring a fancy paisley print with a classic three-button placket & self collar.



051  
CHARCOAL  
MULTI

101  
CREAM  
MULTI

302  
EVERGREEN  
MULTI

| SKU             | S | M | L | XL | 2XL |
|-----------------|---|---|---|----|-----|
| DRP071H-123-051 |   |   |   |    |     |
| DRP071H-123-101 |   |   |   |    |     |
| DRP071H-123-302 |   |   |   |    |     |



**DRP072H-123:**

Short sleeve jersey featuring a winter night print with a classic three-button placket & self collar.



101  
CREAM/  
SAPPHIRE

435  
SAPPHIRE/  
CREAM

598  
CURRANT/  
CREAM

| SKU             | S | M | L | XL | 2XL |
|-----------------|---|---|---|----|-----|
| DRP072H-123-101 |   |   |   |    |     |
| DRP072H-123-435 |   |   |   |    |     |
| DRP072H-123-598 |   |   |   |    |     |



**DRP073H-123:**

Short sleeve jersey featuring an indie flower print with a classic three-button placket & self collar.



051  
CHARCOAL/  
CREAM

435  
SAPPHIRE/  
CREAM

| SKU             | S | M | L | XL | 2XL |
|-----------------|---|---|---|----|-----|
| DRP073H-123-051 |   |   |   |    |     |
| DRP073H-123-435 |   |   |   |    |     |



**DR019LSH-123:**

Long sleeve brushed jersey featuring a feeder stripe with a classic three-button placket, self collar & self-fabric cuffs.



302  
EVERGREEN/  
CHARCOAL

435  
SAPPHIRE/  
CHARCOAL

598  
CURRANT/  
CHARCOAL

| SKU              | S | M | L | XL | 2XL |
|------------------|---|---|---|----|-----|
| DR019LSH-123-302 |   |   |   |    |     |
| DR019LSH-123-435 |   |   |   |    |     |
| DR019LSH-123-598 |   |   |   |    |     |



**DR150LSH-123:**

Heathered solid long sleeve brushed jersey featuring a with a classic three-button placket, self collar & self-fabric cuffs.



051  
HEATHER  
CHARCOAL

302  
HEATHER  
EVERGREEN

435  
HEATHER  
SAPPHIRE

| SKU              | S | M | L | XL | 2XL |
|------------------|---|---|---|----|-----|
| DR150LSH-123-051 |   |   |   |    |     |
| DR150LSH-123-302 |   |   |   |    |     |
| DR150LSH-123-435 |   |   |   |    |     |



**DR189H-222:**

Long sleeve 1/2 zip pullover constructed from our lightweight TYR fleece, featuring a gingham check print with self-fabric banded cuffs & bottom.



051  
CHARCOAL



302  
EVERGREEN



435  
SAPPHIRE



598  
CURRANT

| SKU            | S | M | L | XL | 2XL |
|----------------|---|---|---|----|-----|
| DR189H-222-051 |   |   |   |    |     |
| DR189H-222-302 |   |   |   |    |     |
| DR189H-222-435 |   |   |   |    |     |
| DR189H-222-598 |   |   |   |    |     |



**DR190H-222:**

Long sleeve 1/2 zip pullover constructed from our lightweight TYR fleece, featuring a blackwatch plaid print with self-fabric banded cuffs & bottom.



001  
BLACK

| SKU            | S | M | L | XL | 2XL |
|----------------|---|---|---|----|-----|
| DR190H-222-001 |   |   |   |    |     |



**DR2107-222:**

Long sleeve full two-way zip jacket constructed from a heavy-weight waffle textured fleece that will provide warmth, water & wind protection. Features lower front pockets.



001  
BLACK

400  
NAVY

| SKU            | S | M | L | XL | 2XL |
|----------------|---|---|---|----|-----|
| DR2107-222-001 |   |   |   |    |     |
| DR2107-222-400 |   |   |   |    |     |



**DR2119-222:**

Full-zip sherpa vest featuring a full two-way zipper with lower front pockets and suede accents.



051  
CHARCOAL

222  
NUTMEG



302  
EVERGREEN

598  
CURRANT

| SKU            | S | M | L | XL | 2XL |
|----------------|---|---|---|----|-----|
| DR2119-222-051 |   |   |   |    |     |
| DR2119-222-222 |   |   |   |    |     |
| DR2119-222-302 |   |   |   |    |     |
| DR2119-222-598 |   |   |   |    |     |



## CREAM



DRP071H-123-101  
CREAM  
MULTI



DRP072H-123-101  
CREAM/  
SAPPHIRE



DRP072H-123-435  
SAPPHIRE/  
CREAM



DRP072H-123-598  
CURRANT/  
CREAM



DRP073H-123-051  
CHARCOAL/  
CREAM



DRP073H-123-435  
SAPPHIRE/  
CREAM

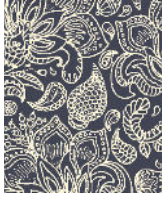


DR2119-222-222  
NUTMEG

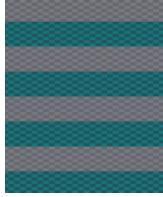
## CHARCOAL



DRP071H-123-051  
CHARCOAL  
MULTI



DRP073H-123-051  
CHARCOAL/  
CREAM



DR019LSH-123-302  
EVERGREEN/  
CHARCOAL



DR019LSH-123-435  
SAPPHIRE/  
CHARCOAL



DR019LSH-123-598  
CURRANT/  
CHARCOAL



DR150LSH-123-051  
HEATHER  
CHARCOAL



DR189H-222-051  
CHARCOAL



DR2119-222-051  
CHARCOAL

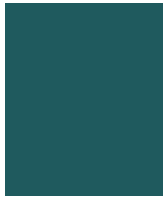
## EVERGREEN



DRP071H-123-302  
EVERGREEN  
MULTI



DR019LSH-123-302  
EVERGREEN/  
CHARCOAL



DR150LSH-123-302  
HEATHER  
EVERGREEN



DR189H-222-302  
EVERGREEN



DR190H-222-001  
BLACK



DR2119-222-302  
EVERGREEN

## SAPPHIRE



DRP072H-123-435  
SAPPHIRE/  
CREAM



DRP073H-123-435  
SAPPHIRE/  
CREAM



DR019LSH-123-435  
SAPPHIRE/  
CHARCOAL



DR150LSH-123-435  
HEATHER  
SAPPHIRE



DR189H-222-435  
SAPPHIRE



DR190H-222-001  
BLACK

## CURRANT



DRP072H-123-598  
CURRANT/  
CREAM



DR019LSH-123-598  
CURRANT/  
CHARCOAL



DR189H-222-598  
CURRANT



DR2119-222-598  
CURRANT

## Order / Logo Notes:

### Logo Placement Options:

- Left Chest
- Left Sleeve
- Left Collar
- Right Chest
- Right Sleeve
- Right Collar
- Yoke
- No Logo

### Logo Colorway Options:

- Color Coordinate
- Club Colors
- Tonal Light
- Tonal Dark
- Contrast
- Tone on Tone