

SUMMER | FALL



Donald Ross  
SPORTSWEAR

2025



# Donald Ross

SPORTSWEAR

## TABLE OF CONTENTS

CLASSIC FIT GUIDE | 3

CLASSIC PATRIOTIC COLLECTION | 4 - 7

CLASSIC KNIT SHIRTS | 8 - 15

CLASSIC LAYERS | 16 - 17

SWEATERS | 18

WOVENS | 19

BOTTOMS | 20 - 21

CLASSIC COLOR STORIES | 22 - 25

ORDER/LOGO NOTES | 26 - 27

**Green Grass Site:**

[www.donaldross.com/green-grass/](http://www.donaldross.com/green-grass/)

**Customer Service:**

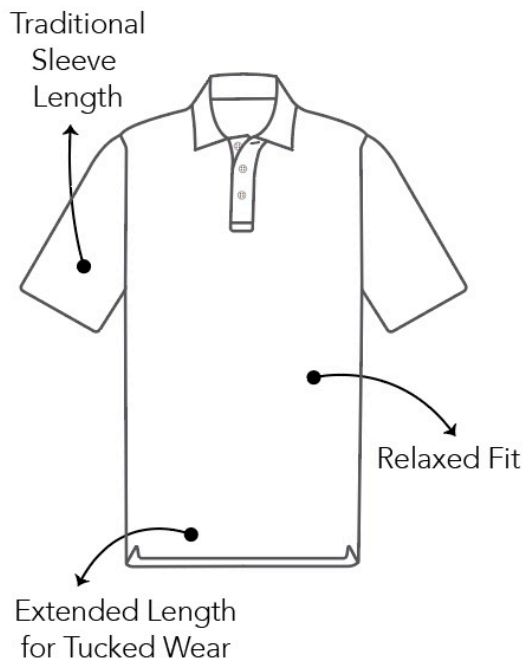
Phone: 910-944-3114

Email: [customerservice@donaldross.com](mailto:customerservice@donaldross.com)

## Classic Fit

Classic garments offer a generous shape through the body with traditional sleeve length. Fit for those who enjoy a slightly oversized, looser fit.

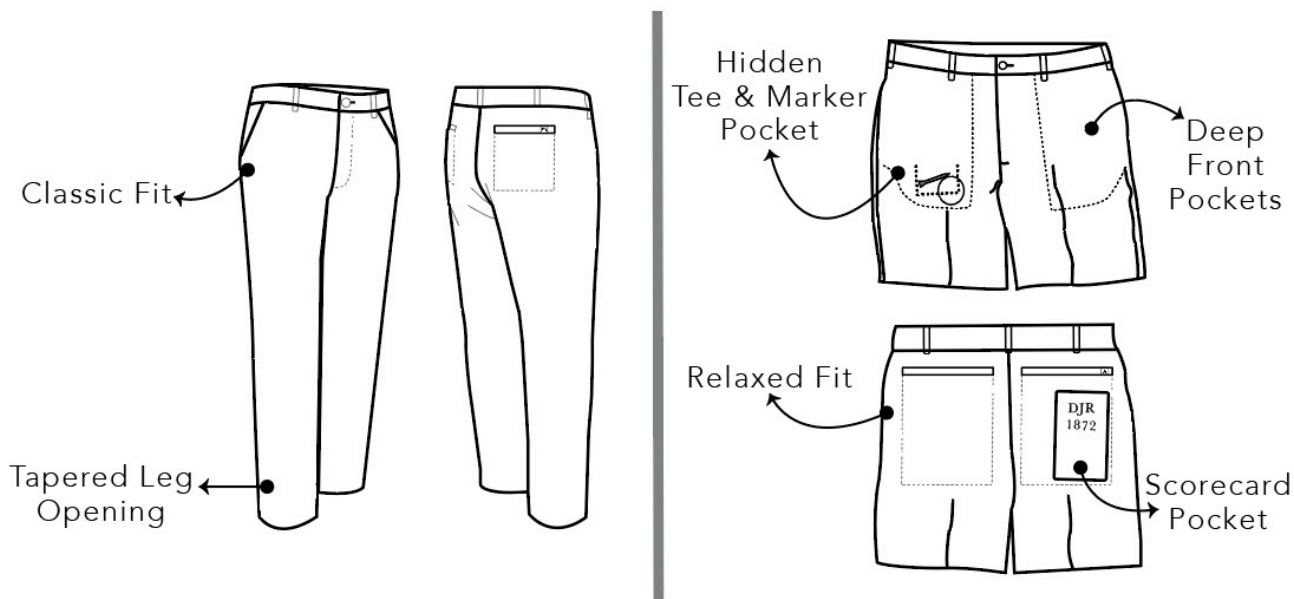
	Weight (lbs)	Sport Coat Size
Small	150-170	38-40
Medium	170-195	40-42
Large	195-225	43-46
X-Large	225-260	47-50
XX-Large	260-280	52-54
XXX-Large	280+	54+



## Bottoms

Pant Inseam Options 30 & 32

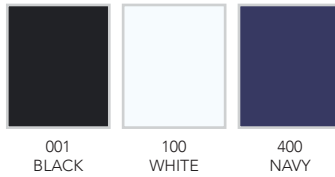
<i>Pants</i>	32	X	34	X	36	38	40	42	44
<i>Shorts</i>	32	33	34	35	36	38	40	42	44





**DR016SC-MSP**

Short sleeve solid baby pique featuring a three-button placket and spread collar. [SL0525]

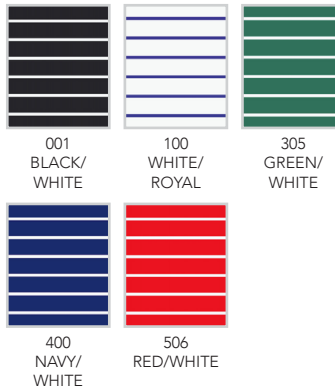


SKU	S	M	L	XL	2XL	3XL
DR016SC-MSP-001						
DR016SC-MSP-100						
DR016SC-MSP-400						



**DR7569-MSP**

Short sleeve jersey featuring a micro stripe with a three-button placket and spread collar. [ST0535]

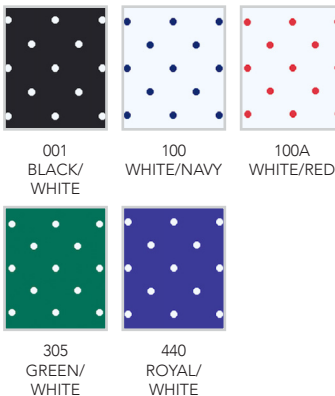


SKU	S	M	L	XL	2XL	3XL
DR7569-MSP-001						
DR7569-MSP-100						
DR7569-MSP-305						
DR7569-MSP-400						
DR7569-MSP-506						



**DRP307-MSP**

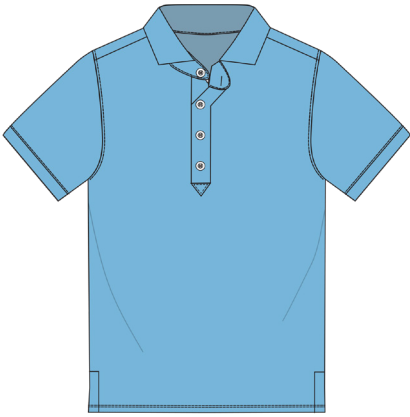
Short sleeve jersey featuring a polka dot print with a three-button placket and spread collar. [PR0565]



SKU	S	M	L	XL	2XL	3XL
DRP307-MSP-001						
DRP307-MSP-100						
DRP307A-MSP-100						
DRP307-MSP-305						
DRP307-MSP-440						

**ELMIRA | DR076T-225**

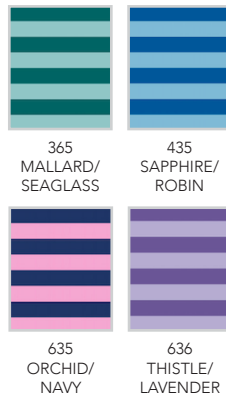
Short sleeve solid mélange jersey features a four-button tailored placket and spread collar. [SL0535]



SKU	S	M	L	XL	2XL	3XL
DR076T-225-001						
DR076T-225-100						
DR076T-225-365						
DR076T-225-400						
DR076T-225-435						
DR076T-225-491						
DR076T-225-505						
DR076T-225-640						

**BELLEAIR | DR019-225**

Short sleeve jersey features a feeder stripe with a three-button placket and spread collar. [ST0535]



SKU	S	M	L	XL	2XL	3XL
DR019-225-365						
DR019-225-435						
DR019-225-635						
DR019-225-636						



**MONROE | DR361-225**

Short sleeve **baby pique** features a white ground multi stripe with a three-button placket and spread collar. [ST0535]



SKU	S	M	L	XL	2XL	3XL
DR361-225-310						
DR361-225-322						
DR361-225-491						
DR361-225-505						
DR361-225-635						
DR361-225-640						



**LOVELL | DR455-225**

Short sleeve **jersey** features a pin stripe with a three-button placket and spread collar. [ST0535]

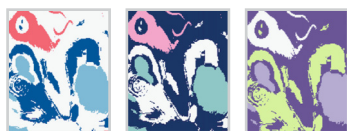


SKU	S	M	L	XL	2XL	3XL
DR455-225-001						
DR455-225-310						
DR455-225-435						
DR455-225-505						
DR455-225-635						
DR455-225-636						
DR455-225-640						



**DENVER | DRP257-225**

Short sleeve jersey features an abstract floral print with a three-button placket and spread collar. [PR0575]



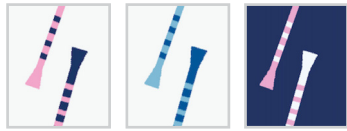
100 WHITE MULTI      400 NAVY MULTI      636 THISTLE MULTI

SKU	S	M	L	XL	2XL	3XL
DRP257-225-100						
DRP257-225-400						
DRP257-225-636						



**DELRAY | DRP258-225**

Short sleeve baby pique features a striped tees print with a three-button placket and spread collar. [PR0575]



100 WHITE/NAVY MULTI      100A WHITE/SAPPHIRE MULTI      400 NAVY MULTI



435 SAPPHIRE MULTI      640 LAVENDER MULTI

SKU	S	M	L	XL	2XL	3XL
DRP258-225-100						
DRP258A-225-100						
DRP258-225-400						
DRP258-225-435						
DRP258-225-640						



**BRUNSWICK | DRP259-225**

Short sleeve **jersey** features a squiggles print with a three-button placket and spread collar. [PR0575]



100 WHITE MULTI      491 ROBIN MULTI      640 LAVENDER MULTI

SKU	S	M	L	XL	2XL	3XL
DRP259-225-100						
DRP259-225-491						
DRP259-225-640						



**VEGAS | DRP260-225**

Short sleeve **jersey** features a suits and chips print with a three-button placket and spread collar. [PR0575]



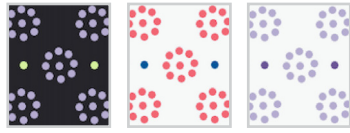
001 BLACK      365 MALLARD      400 NAVY  
 491 ROBIN      505 PAPRIKA      636 THISTLE

SKU	S	M	L	XL	2XL	3XL
DRP260-225-001						
DRP260-225-365						
DRP260-225-400						
DRP260-225-491						
DRP260-225-505						
DRP260-225-636						

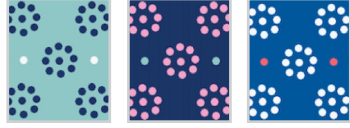


**WINNIPEG | DRP261-225**

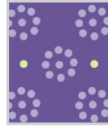
Short sleeve jersey features a circle flower print with a three-button placket and spread collar. [PR0575]



001 BLACK/LAVENDER/LIME  
100 WHITE/PAPRIKA/SAPPHIRE  
100A WHITE/LAVENDER/THISTLE



310 SEAGLASS/NAVY/WHITE  
400 NAVY/ORCHID/SEAGLASS  
435 SAPPHIRE/WHITE/PAPRIKA



636 THISTLE/LAVENDER/LIME

SKU	S	M	L	XL	2XL	3XL
DRP261-225-001						
DRP261-225-100						
DRP261A-225-100						
DRP261-225-310						
DRP261-225-400						
DRP261-225-435						
DRP261-225-636						

**BRADENTON | DRP262-225**

Short sleeve jersey features a dash print with a three-button placket and spread collar with solid inside collar-band and inside placket. [PR0575]



001 BLACK/LAVENDER  
400 NAVY/SEAGLASS  
435 SAPPHIRE/WHITE



491 ROBIN/SAPPHIRE  
505 PAPRIKA/WHITE  
635 ORCHID/WHITE



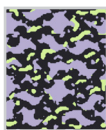
636 THISTLE/LIME

SKU	S	M	L	XL	2XL	3XL
DRP262-225-001						
DRP262-225-400						
DRP262-225-435						
DRP262-225-491						
DRP262-225-505						
DRP262-225-635						
DRP262-225-636						

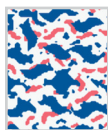


SAVANNAH | DRP263-225

Short sleeve jersey features a camouflage print with a three-button placket and spread collar. [PR0575]



001  
BLACK/LAV-  
ENDER/LIME



100  
WHITE/  
SAPPHIRE/  
PAPRIKA



400  
NAVY/  
SEAGLASS/  
ORCHID



491  
ROBIN/  
SAPPHIRE/  
WHITE



635  
ORCHID/  
NAVY/WHITE



636  
THISTLE/  
LIME/  
LAVENDER

SKU	S	M	L	XL	2XL	3XL
DRP263-225-001						
DRP263-225-100						
DRP263-225-400						
DRP263-225-491						
DRP263-225-635						
DRP263-225-636						

**DR157-MSP**

Long sleeve solid jersey mock neck layering shirt with ribbed cuffs and neck. [LS0575]



SKU	S	M	L	XL	2XL	3XL
DR157-MSP-001						
DR157-MSP-056						
DR157-MSP-100						
DR157-MSP-400						

**DR159-MSP**

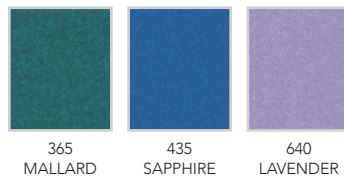
Long sleeve solid jersey features a classic three-button placket, self-collar, and ribbed cuffs. [LS0595]



SKU	S	M	L	XL	2XL	3XL
DR159-MSP-001						
DR159-MSP-056						
DR159-MSP-100						
DR159-MSP-400						
DR159-MSP-465						

**BANDON | DR076MLS-225**

Long sleeve mélange i-Peach jersey features a classic three-button placket, self-collar, and ribbed cuffs. [LS0526]



SKU	S	M	L	XL	2XL	3XL
DR076MLS-225-365						
DR076MLS-225-435						
DR076MLS-225-640						



**PARKLAND PULLOVER | DR2001LS-MSP**

Long sleeve lightweight solid 1/2 zip pullover features set-in sleeve construction, storm flap, self-fabric banded cuffs and bottom. Model is constructed with a french terry fabric that offers four-way stretch to provide all day comfort. [LR0026]



SKU	S	M	L	XL	2XL	3XL
DR2001LS-MSP-001						
DR2001LS-MSP-008						
DR2001LS-MSP-400						
DR2001LS-MSP-440						



**THE YEAR ROUNDER | DR201-225**

Long sleeve 1/2 zip pullover features our signature performance fleece. Model offers set-in shoulder construction and self fabric banded cuffs and bottom. [LR0576]



SKU	S	M	L	XL	2XL	3XL
DR201-225-001						
DR201-225-365						
DR201-225-400						
DR201-225-435						
DR201-225-491						
DR201-225-505						
DR201-225-640						



**HOUNDSTOOTH YEAR ROUNDER | DR201P-225**

Long sleeve 1/2 zip pullover features our signature performance fleece with a houndstooth pattern. Model offers set-in shoulder construction and self fabric banded cuffs and bottom. [LR0527]



SKU	S	M	L	XL	2XL	3XL
DR201P-225-001						
DR201P-225-365						
DR201P-225-435						
DR201P-225-636						



**COLTON | DR2316A-225**

Long sleeve full zip jacket. Model features full two-way zipper, accent fabric on collar and lower front pockets, fleece lined collar interior, and two lower front pockets with zipper closures. Model offers self-fabric cuffs and bottom and rubber thistle logo on back collar. [LR0579]

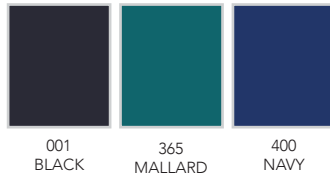


SKU	S	M	L	XL	2XL	3XL
DR2316A-225-001						
DR2316A-225-365						
DR2316A-225-400						
DR2316A-225-435						



**BROCK | DR2629-225**

Full zip quilted vest. Model features six button center front snap placket, two lower front welted pockets, and rubber thistle logo on back collar. [LR0095]

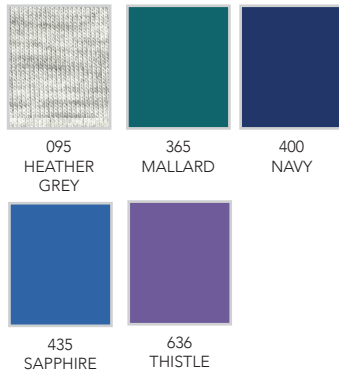


SKU	S	M	L	XL	2XL	3XL
DR2629-225-001						
DR2629-225-365						
DR2629-225-400						



**DUKE | DR2631-225**

Long sleeve hoodie pullover. Model features set-in shoulder construction, two lower front pockets, tonal cord strings, banded cuffs and bottom, and embroidered thistle logo on wearer's right wrist. [LR0008]



SKU	S	M	L	XL	2XL	3XL
DR2631-225-095						
DR2631-225-365						
DR2631-225-400						
DR2631-225-435						
DR2631-225-636						



**NARIN | DR001-225**

Long sleeve V-Neck sweater constructed with 100% royal cashmere. Model offers set-in shoulder construction, and banded cuffs and bottom. [SW00571]

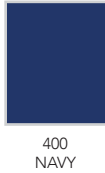


SKU	S	M	L	XL	2XL	3XL
DR001-225-001						
DR001-225-095						
DR001-225-100						
DR001-225-365						
DR001-225-400						
DR001-225-491						
DR001-225-526						
DR001-225-636						
DR001-225-704						



**BERWICK | DR231LS-225**

Long sleeve 1/2 zip sweater constructed of 100% merino wool. Model offers jacquard pattern, set-in shoulder construction, and banded cuffs and bottom. [SW0589]



SKU	S	M	L	XL	2XL	3XL
DR231LS-225-400						

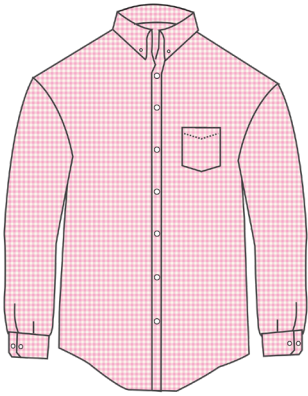


**ABERDEEN | DR403-225**

Long sleeve 1/2 zip sweater constructed of 100% merino wool. Model offers herringbone jacquard pattern, set-in shoulder construction, and banded cuffs and bottom. [SW0589]



SKU	S	M	L	XL	2XL	3XL
DR403-225-001						

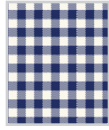


**DR605-MSP**

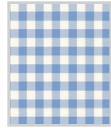
Donald Ross woven shirts are constructed from a nylon/spandex blend for comfort and mobility, with a gingham check print. Features long sleeves, traditional eight-button front, two-button adjustable cuffs, and button down collar. [WV0576]



001  
BLACK/  
WHITE



400  
NAVY/  
WHITE

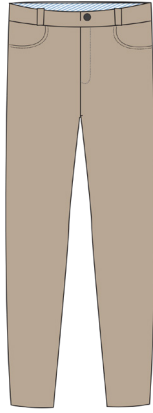


420  
SKY/  
WHITE



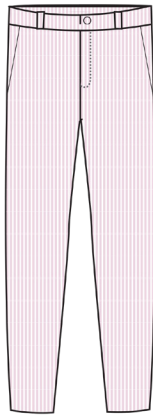
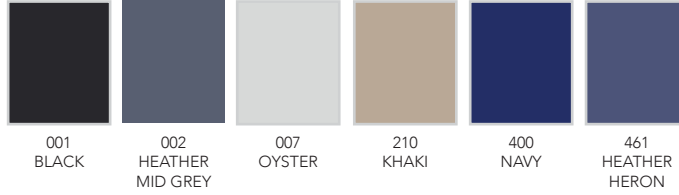
610  
PINK/  
WHITE

SKU	S	M	L	XL	2XL
DR605-MSP-001					
DR605-MSP-400					
DR605-MSP-420					
DR605-MSP-610					



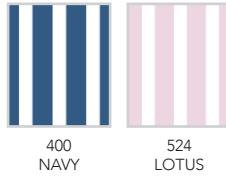
**WESTERN POCKET PANT | DR754-MSP**

Constructed of "Thistle Stretch" fabric that delivers breathable four-way stretch with quick dry properties. Designed with a comfortable modern fit, and the ideal weight for all weather conditions. [BT0047]



**SEERSUCKER PERFORMANCE PANTS | DR756-MSP**

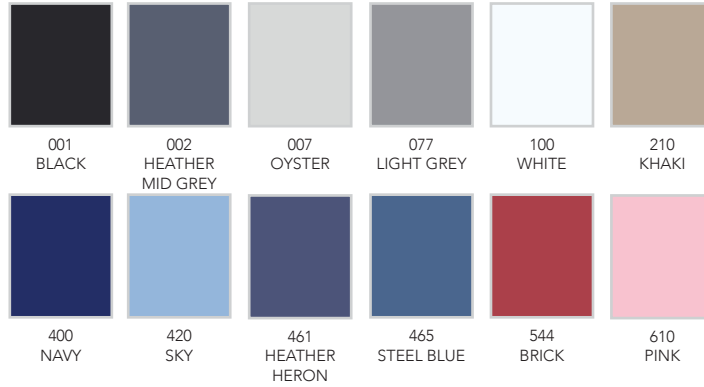
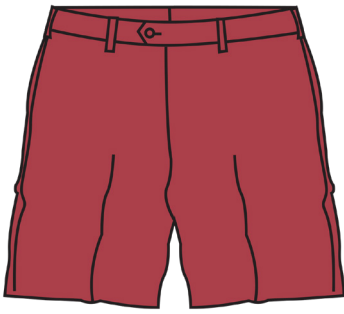
Constructed of "Thistle Stretch" fabric that delivers breathable four-way stretch with quick dry properties. Designed with **flat front** styling, a comfortable modern fit, and the ideal weight for all weather conditions. [BT0047]



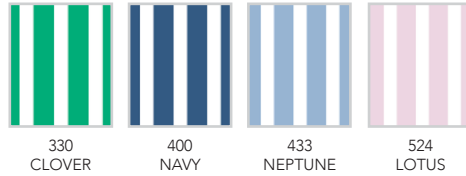
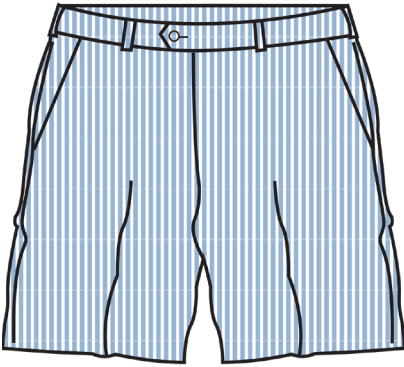


**THE WALKER II | DR702-MSP**

Flat front solid, performance walk shorts. Constructed of "Thistle Stretch" fabric that delivers breathable four-way stretch with quick dry properties. Engineered with 8.5" inseam, deep front pockets, hidden coin pocket, and scorecard back pocket. [BT0045]

**SEERSUCKER STRETCH WALKER II SHORT | DR704-MSP**

Flat front solid, performance walk shorts. Constructed of "Thistle Stretch" fabric that delivers breathable four-way stretch with quick dry properties. Engineered with 8.5" inseam, deep front pockets, hidden coin pocket, and scorecard back pocket. [BT0045]



SOLID



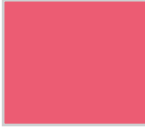
DR016SC-MSP-100  
DR157-MSP-100  
DR159-MSP-100  
DR076T-225-100  
WHITE



DR076T-225-435  
DR076MLS-225-435  
SAPPHIRE

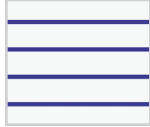


DR076T-225-491  
ROBIN



DR076T-225-505  
PAPRIKA

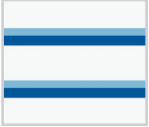
STRIPES



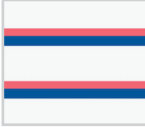
DR7569-225-100  
WHITE/ROYAL



DR019-225-435  
SAPPHIRE/ROBIN



DR361-225-491  
ROBIN/SAPPHIRE



DR361-225-505  
PAPRIKA/SAPPHIRE



DR455-225-435  
SAPPHIRE/WHITE



DR455-225-505  
PAPRIKA/WHITE

PRINTS



DRP307-225-440  
ROYAL/WHITE



DRP257-225-100  
WHITE MULTI



DRP258A-225-100  
WHITE/SAPPHIRE  
MULTI



DRP258-225-435  
SAPPHIRE MULTI



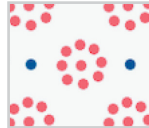
DRP258-225-491  
ROBIN MULTI



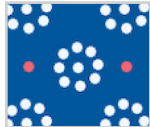
DRP260-225-491  
ROBIN



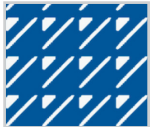
DRP260-225-505  
PAPRIKA



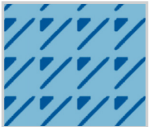
DRP261-225-100  
WHITE/PAPRIKA/  
SAPPHIRE



DRP261-225-435  
SAPPHIRE/WHITE/  
PAPRIKA



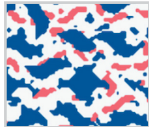
DRP262-225-435  
SAPPHIRE/WHITE



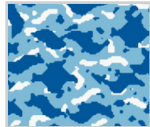
DRP262-225-491  
ROBIN/SAPPHIRE



DRP262-225-505  
PAPRIKA/WHITE

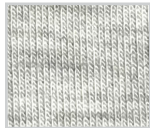


DRP263-225-100  
WHITE/SAPPHIRE/  
PAPRIKA



DRP263-225-491  
ROBIN/SAPPHIRE/  
WHITE

LAYERS



DR2631-225-095  
HEATHER GREY



DR201-225-435  
DR2316A-225-435  
DR2631-225-435  
SAPPHIRE



DR201P-225-435  
SAPPHIRE/NAVY



SP2001LS-MSP-440  
ROYAL

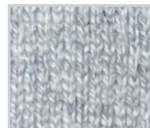


DR201-225-491  
ROBIN



DR201-225-505  
PAPRIKA

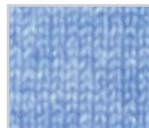
SWEATERS



DR001-225-095  
HEATHER GREY

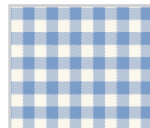


DR001-225-100  
WHITE



DR001-225-491  
ROBIN

WOVENS



DR605-MSP-420  
SKY BLUE



DR605-MSP-610  
PINK

SOLID



DR016SC-MSP-100  
DR157-MSP-100  
DR159-MSP-100  
DR076T-225-100  
WHITE



DR076T-225-365  
DR076MLS-225-365  
MALLARD



DR016SC-MSP-400  
DR157-MSP-400  
DR159-MSP-400  
DR076T-225-400  
NAVY

STRIPES



DR7569-225-400  
NAVY/WHITE



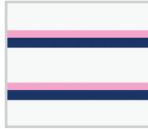
DR019-225-365  
MALLARD/  
SEAGLASS



DR019-225-635  
ORCHID/NAVY



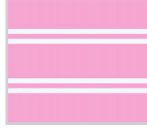
DR361-225-310  
SEAGLASS/  
MALLARD



DR361-225-635  
ORCHID/NAVY

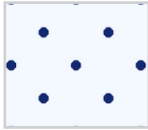


DR455-225-310  
SEAGLASS/NAVY

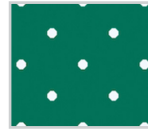


DR455-225-635  
ORCHID/WHITE

PRINTS



DRP307-225-100  
WHITE/NAVY



DRP307-225-305  
GREEN/WHITE



DRP257-225-400  
NAVY MULTI



DRP258-225-100  
WHITE/NAVY  
MULTI



DRP258-225-400  
NAVY MULTI



DRP259-225-100  
WHITE MULTI



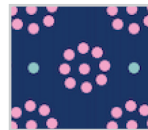
DRP260-225-365  
MALLARD



DRP260-225-400  
NAVY



DRP261-225-310  
SEAGLASS/NAVY/  
WHITE



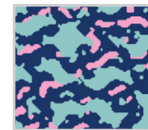
DRP261-225-400  
NAVY/ORCHID/  
SEAGLASS



DRP262-225-400  
NAVY/SEAGLASS



DRP262-225-635  
ORCHID/WHITE

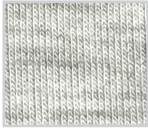


DRP263-225-400  
NAVY/SEAGLASS/  
ORCHID



DRP263-225-635  
ORCHID/NAVY/  
WHITE

LAYERS



DR2631-225-095  
HEATHER GREY



DR201P-225-365  
MALLARD/NAVY



DR201-225-365  
DR2316A-225-365  
DR2629-225-365  
DR2631-225-365  
MALLARD

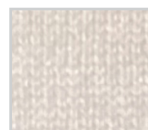


DR2001LS-MSP-400  
DR201-225-400  
DR2316A-225-400  
DR2629-225-400  
DR2631-225-400  
NAVY

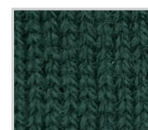
SWEATERS



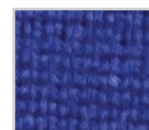
DR001-225-095  
HEATHER GREY



DR001-225-100  
WHITE



DR001-225-365  
MALLARD



DR001-225-400  
NAVY



DR231LS-225-400  
NAVY

WOVENS



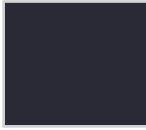
DR605-MSP-400  
NAVY



DR605-MSP-610  
PINK

BLACK | THISTLE | LAVENDER | LIME

SOLID



DR016SC-MSP-001  
DR157-MSP-001  
DR159-MSP-001  
DR076T-225-001  
BLACK



DR016SC-MSP-100  
DR157-MSP-100  
DR159-MSP-100  
DR076T-225-100  
WHITE

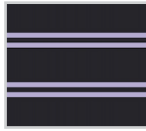


DR076T-225-640  
DR076MLS-225-640  
LAVENDER

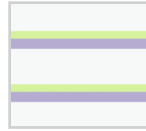
STRIPES



DR7569-MSP-001  
BLACK/WHITE



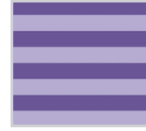
DR455-225-001  
BLACK/LAVENDER



DR361-225-322  
LIME/LAVENDER



DR361-225-640  
LAVENDER/BLACK



DR019-225-636  
THISTLE/  
LAVENDER

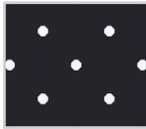


DR455-225-636  
THISTLE/WHITE



DR455-225-640  
LAVENDER/LIME

PRINTS



DRP307-225-001  
BLACK/WHITE



DRP257-225-636  
THISTLE MULTI



DRP258-225-640  
LAVENDER MULTI



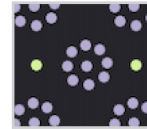
DRP259-225-640  
LAVENDER MULTI



DRP260-225-001  
BLACK



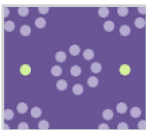
DRP260-225-636  
THISTLE



DRP261-225-001  
BLACK/LAVENDER/  
LIME



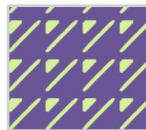
DRP261A-225-100  
WHITE/LAVENDER/  
THISTLE



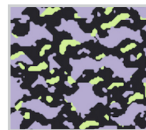
DRP261-225-636  
THISTLE/  
LAVENDER/LIME



DRP262-225-400  
BLACK/LAVENDER



DRP262-225-635  
THISTLE/LIME



DRP263-225-001  
BLACK/LAVENDER/  
LIME



DRP263-225-636  
THISTLE/LIME/  
LAVENDER

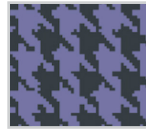
LAYERS



DR2001LS-MSI-001  
DR201-225-001  
DR2316A-225-001  
DR2629-225-001  
BLACK



DR201P-225-001  
BLACK/GREY



DR201P-225-636  
THISTLE/BLACK

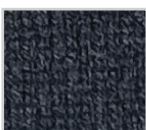


DR2631-225-636  
THISTLE



DR201-225-640  
LAVENDER

SWEATERS



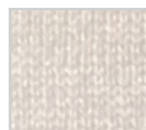
DR001-225-001  
BLACK



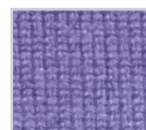
DR403-225-001  
BLACK/GREY



DR001-225-095  
HEATHER GREY



DR001-225-100  
WHITE



DR001-225-636  
THISTLE

WOVENS



DR605-MSP-001  
BLACK

## Order / Logo Notes:

### Logo Placement Options:

- Left Chest
- Left Sleeve
- Left Collar
- Right Chest
- Right Sleeve
- Right Collar
- Yoke
- No Logo

### Logo Colorway Options:

- Color Coordinate
- Club Colors
- Tonal Light
- Tonal Dark
- Contrast
- Tone on Tone

For more information visit: [www.donaldross.com/green-grass/](http://www.donaldross.com/green-grass/)

Contact your sales representative or contact customer service

Via Phone: 910-944-3114

Via Email: [customerservice@donaldross.com](mailto:customerservice@donaldross.com)



