

SUMMER | FALL



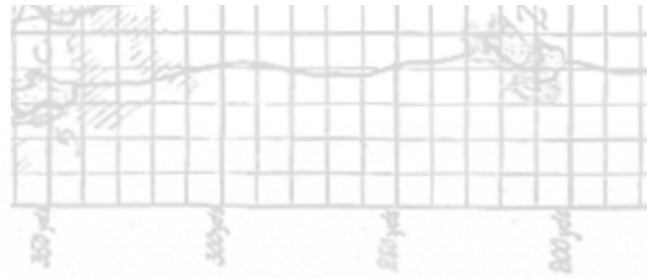
DONALD ROSS
SPORT

2025



Donald Ross

SPORTSWEAR



DEFENDING PAR
Since 1872



D O N A L D R O S S S P O R T S W E A R

Our company is a small operation made up of passionate golfers with decades of experience in apparel. We design our garments with the golfer in mind, but recognize our pieces should have the versatility to be worn off the course in everyday life. Consistently creating each piece in our line with longevity, practicality, and elegance at the forefront because we just care more.

for the winter of the annual carnival...
"simply because of its fascinating variety and variety." First played at the Bath Club in London in 1866 and having its origin in London, it has rapidly increased in popularity until it is now favored American. Boston was first to take it up, something like a year ago, and it is most played almost exclusively in the United and Kingdom and somewhat even and obtaining attention among devotees of the game every where.
"The game is clearly on the march in an article by Arthur Loring Bence in a recent issue of Atlantic's which I feel sure



DONALD ROSS
SPORT

TABLE OF CONTENTS

SPORT FIT GUIDE | 5

SPORT PATRIOTIC COLLECTION | 6 - 9

SPORT KNIT SHIRTS | 10 - 18

SPORT SWEATERS | 19

SPORT LAYERS | 20 - 23

BOTTOMS | 24 - 25

SPORT COLOR STORIES | 26 - 29

ORDER/LOGO NOTES | 30

TOURNAMENT PROGRAM | 31 - 33

Green Grass Site:

www.donaldross.com/green-grass/


Customer Service:

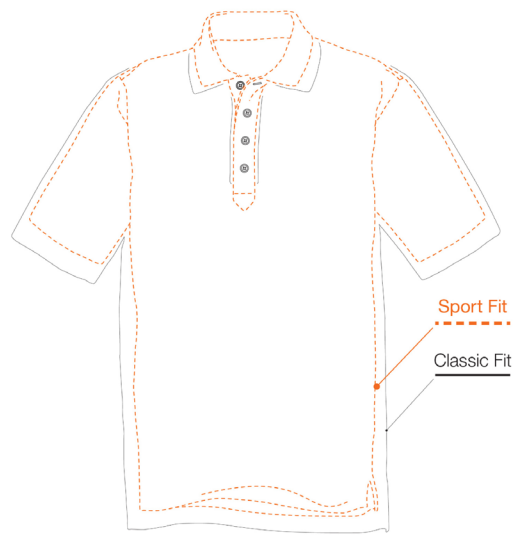
Phone: 910-944-3114

Email: customerservice@donaldross.com

SPORT *Fit*

SPORT garments offer a trimmer shape through body and sleeve with added stretch for the players that enjoy a closer to body, more *athletic fit*.

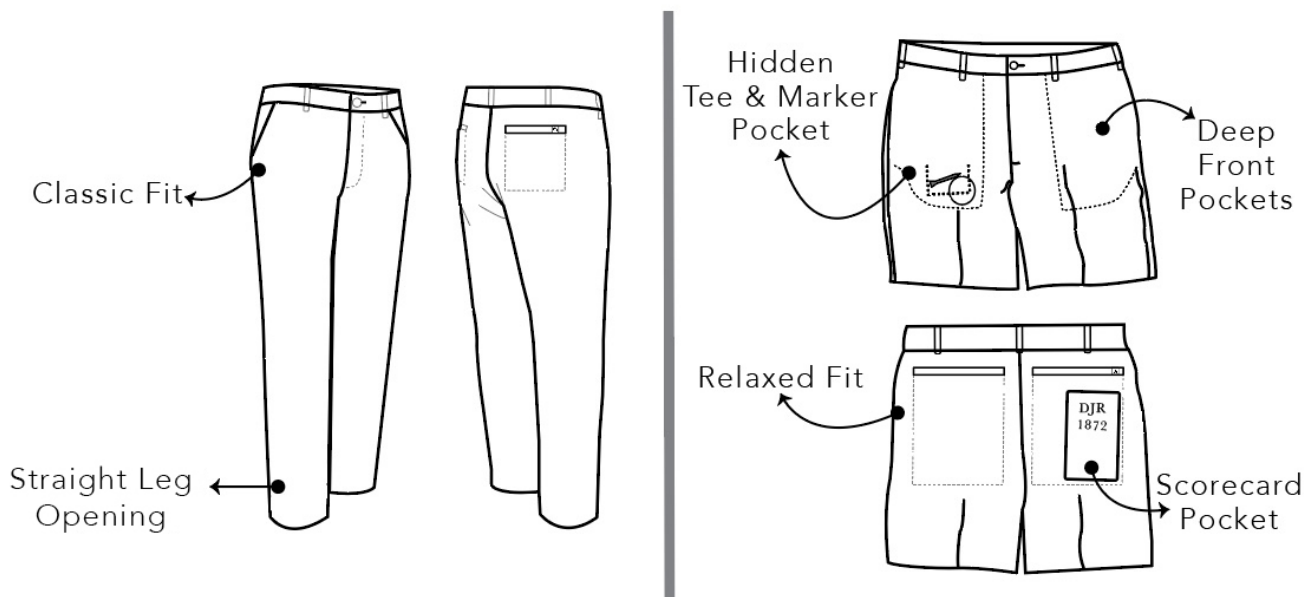
 <i>Weight (lbs)</i>	<i>Sport Coat Size</i>
<i>Small</i>	<i>36-39</i>
<i>Medium</i>	<i>39-41</i>
<i>Large</i>	<i>41-44</i>
<i>X-Large</i>	<i>44-48</i>
<i>XX-Large</i>	<i>50+</i>



Bottoms

Pant Inseam Options 30 & 32

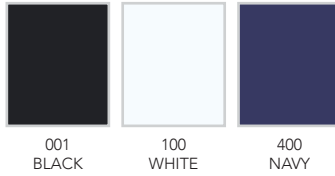
<i>Pants</i>	<i>32</i>	<i>X</i>	<i>34</i>	<i>X</i>	<i>36</i>	<i>38</i>	<i>40</i>	<i>42</i>	<i>44</i>
<i>Shorts</i>	<i>32</i>	<i>33</i>	<i>34</i>	<i>35</i>	<i>36</i>	<i>38</i>	<i>40</i>	<i>42</i>	<i>44</i>





DON | SP016SC-MSP

Short sleeve solid **baby pique** features a three-button placket and spread collar. [SL0525]

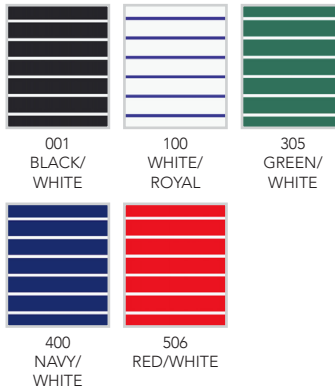


SKU	S	M	L	XL	2XL
SP016SC-MSP-001					
SP016SC-MSP-100					
SP016SC-MSP-400					



CLARK | SP7569-MSP

Short sleeve **jersey** features a micro stripe with a three-button placket and spread collar. [ST0535]

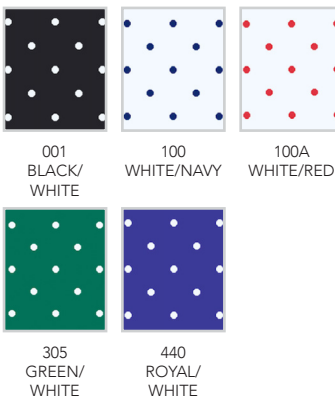


SKU	S	M	L	XL	2XL
SP7569-MSP-001					
SP7569-MSP-100					
SP7569-MSP-305					
SP7569-MSP-400					
SP7569-MSP-506					



ROB | SPP307-MSP

Short sleeve **jersey** features a polka dot print with a three-button placket and spread collar. [PR0565]



SKU	S	M	L	XL	2XL
SPP307-MSP-001					
SPP307-MSP-100					
SPP307A-MSP-100					
SPP307-MSP-305					
SPP307-MSP-440					



TOBY | SP016K-225

Short sleeve solid **baby pique** features a three-button placket and fully fashioned collar. [SL0525]



001
BLACK

044
SLATE

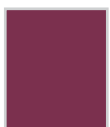
100
WHITE



406
IRIS

470
AZURE

498
COASTAL



526
MERLOT

SKU	S	M	L	XL	2XL
SP016K-225-001					
SP016K-225-044					
SP016K-225-100					
SP016K-225-406					
SP016K-225-470					
SP016K-225-498					
SP016K-225-526					



OWEN | SP019-225

Short sleeve **jersey** features a two color feeder stripe, three-button placket and solid color spread collar. [ST0535]



001
BLACK/
WHITE

335
JADE/
WHITE

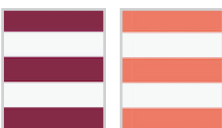
406
IRIS/
WHITE



424
DENIM/
WHITE

470
AZURE/
WHITE

498
COASTAL/
WHITE



526
MERLOT/
WHITE

734
NECTAR/
WHITE

SKU	S	M	L	XL	2XL
SP019-225-001					
SP019-225-335					
SP019-225-406					
SP019-225-424					
SP019-225-470					
SP019-225-498					
SP019-225-526					
SP019-225-734					



ELOM | SP151-225

Short sleeve **mélange jersey** features a shadow stripe with a three-button placket and spread collar. [ST0535]



001
BLACK/IRIS/
WHITE



335
JADE/AZURE/
WHITE



406
IRIS/MARIGOLD/
BLACK



424
DENIM/WHITE/
MERLOT



470
AZURE/JADE/
WHITE



526
MERLOT/
SLATE/DENIM



734
NECTAR/
AZURE/
WHITE

SKU	S	M	L	XL	2XL
SP151-225-001					
SP151-225-335					
SP151-225-406					
SP151-225-424					
SP151-225-470					
SP151-225-526					
SP151-225-734					



MURDOCH | SP565-225

Short sleeve **jersey** features a multi-stripe with a two-button placket and spread collar. [ST0535]



044
SLATE/DENIM/
WHITE



100
WHITE/
BLACK/IRIS



100A
WHITE/
AZURE/JADE



406
IRIS/WHITE/
COASTAL



424
DENIM/
MERLOT/
WHITE



470
AZURE/WHITE/
NECTAR

SKU	S	M	L	XL	2XL
SP565-225-044					
SP565-225-100					
SP565A-225-100					
SP565-225-406					
SP565-225-424					
SP565-225-470					

CODY | SP2829-225

Short sleeve multi-stripe jersey features a three-button placket and spread collar. [ST0535]



001
BLACK/IRIS/
MARIGOLD



100
WHITE/
DENIM/
MERLOT



100A
WHITE/
COASTAL/IRIS



100B
WHITE/AZURE/
NECTAR



406
IRIS/
COASTAL/
MARIGOLD



470
AZURE/JADE/
WHITE



526
MERLOT/
SLATE/WHITE

SKU	S	M	L	XL	2XL
SP2829-225-001					
SP2829-225-100					
SP2829A-225-100					
SP2829B-225-100					
SP2829-225-406					
SP2829-225-470					
SP2829-225-526					

JACQUES | SPP020-225

Short sleeve jersey features a lace floral print with a two-button placket and spread collar. [PR0575]



001
BLACK/WHITE



044
SLATE/WHITE



335
JADE/WHITE



406
IRIS/WHITE



470
AZURE/
WHITE



526
MERLOT/
WHITE

SKU	S	M	L	XL	2XL
SPP020-225-001					
SPP020-225-044					
SPP020-225-335					
SPP020-225-406					
SPP020-225-470					
SPP020-225-526					



CURTIS | SPP021-225

Short sleeve jersey features an argyle print with a three-button placket and solid fully fashioned collar. [PR0575]



001
BLACK/IRIS/
MARIGOLD



100
WHITE/
SLATE/
MERLOT



100A
WHITE/AZURE/
NECTAR



335
JADE/AZURE/
GRANITE



498
COASTAL/
IRIS/
MARIGOLD



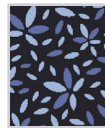
526
MERLOT/
DENIM/
SLATE

SKU	S	M	L	XL	2XL
SPP021-225-001					
SPP021-225-100					
SPP021A-225-100					
SPP021-225-335					
SPP021-225-498					
SPP021-225-526					



SIMON | SPP022-225

Short sleeve baby pique features a floral print with a three-button placket and spread collar. [PR0575]



001
BLACK/IRIS/
COASTAL



100
WHITE/
BLACK/IRIS



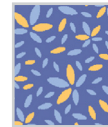
100A
WHITE/
MERLOT/
DENIM



100B
WHITE/
NECTAR/
AZURE



335
JADE/AZURE/
WHITE



406
IRIS/
MARIGOLD/
COASTAL



424
DENIM/
WHITE/SLATE



470
AZURE/
NECTAR/
JADE

SKU	S	M	L	XL	2XL
SPP022-225-001					
SPP022-225-100					
SPP022A-225-100					
SPP022B-225-100					
SPP022-225-335					
SPP022-225-406					
SPP022-225-424					
SPP022-225-470					



MITCHEL | SPP023-225

Short sleeve jersey features a club and ball print with a three-button placket and spread collar. [PR0575]



001
BLACK



335
JADE



406
IRIS



424
DENIM



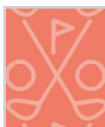
470
AZURE



498
COASTAL



526
MERLOT



734
NECTAR

SKU	S	M	L	XL	2XL
SPP023-225-001					
SPP023-225-335					
SPP023-225-406					
SPP023-225-424					
SPP023-225-470					
SPP023-225-498					
SPP023-225-526					
SPP023-225-734					



CALLAN | SPP024-225

Short sleeve jersey features a shark print with a three-button placket and spread collar. [PR0575]



001
BLACK/
COASTAL



100
WHITE/
DENIM



100A
WHITE/
MERLOT



100B
WHITE/
NECTAR



406
IRIS/
MARIGOLD



470
AZURE/
WHITE



470A
AZURE/
JADE

SKU	S	M	L	XL	2XL
SPP024-225-001					
SPP024-225-100					
SPP024A-225-100					
SPP024B-225-100					
SPP024-225-406					
SPP024-225-470					
SPP024A-225-470					



JOSH | SPP025-225

Short sleeve **jersey** features a football collage print with a three-button placket and spread collar. [PR0575]



001
BLACK/
MARIGOLD



100
WHITE/
BLACK



335
JADE/AZURE



424
DENIM/
WHITE



470
AZURE/
WHITE



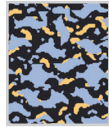
526
MERLOT/
WHITE

SKU	S	M	L	XL	2XL
SPP025-225-001					
SPP025-225-100					
SPP025-225-335					
SPP025-225-424					
SPP025-225-470					
SPP025-225-526					



BRYCE | SPP026-225

Short sleeve **jersey** features a camouflage print with a three-button placket and spread collar. [PR0575]



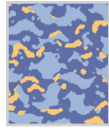
001
BLACK/
COASTAL/
MARIGOLD



100
WHITE/
DENIM/
MERLOT



100A
WHITE/
AZURE/JADE



406
IRIS/
COASTAL/
MARIGOLD



470
AZURE/
NECTAR/
WHITE



526
MERLOT/
SLATE/
WHITE

SKU	S	M	L	XL	2XL
SPP026-225-001					
SPP026-225-100					
SPP026A-225-100					
SPP026-225-406					
SPP026-225-470					
SPP026-225-526					



MARVIN | SPP027-225

Short sleeve **jersey** features a Scotty dog print with a three-button placket and spread collar. [PR0575]



001
BLACK/
COASTAL

044
SLATE/
MERLOT

406
IRIS/
MARIGOLD



424
DENIM/
WHITE



470
AZURE/
JADE



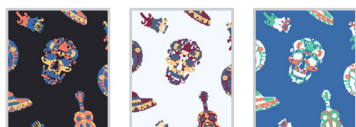
734
NECTAR/
AZURE

SKU	S	M	L	XL	2XL
SPP027-225-001					
SPP027-225-044					
SPP027-225-406					
SPP027-225-424					
SPP027-225-470					
SPP027-225-734					



ACALAN | SPP028-225

Short sleeve **jersey** features a multicolor day of the dead print with a three-button placket and spread collar. [PR0575]



001
BLACK MULTI

100
WHITE MULTI

470
AZURE MULTI

SKU	S	M	L	XL	2XL
SPP028-225-001					
SPP028-225-100					
SPP028-225-470					



BROOKS | SP159-MSP

Long sleeve solid jersey features a three-button placket, spread collar, ribbed cuffs, and a rubber thistle logo on the back yoke. [LS0595]



001
BLACK

056
STEEL GREY

100
WHITE



400
NAVY

465
STEEL BLUE

SKU	S	M	L	XL	2XL
SP159-MSP-001					
SP159-MSP-056					
SP159-MSP-100					
SP159-MSP-400					
SP159-MSP-465					



MAC | SP076MLS-225

Long sleeve mélange i-Peach jersey features a classic three-button placket, spread collar, and ribbed cuffs. [LS0526]



044
SLATE

406
IRIS

526
MERLOT

SKU	S	M	L	XL	2XL
SP076MLS-225-044					
SP076MLS-225-406					
SP076MLS-225-526					



GULLANE | SP317W-225

Long sleeve 1/2 zip wind sweater constructed of 100% merino wool. Model offers stretch lining, set-in shoulder construction, and banded cuffs and bottom. [SW00511]



095
HEATHER
GREY

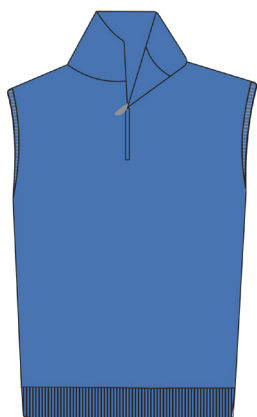


400
NAVY



470
AZURE

SKU	S	M	L	XL	2XL
SP317W-225-095					
SP317W-225-400					
SP317W-225-470					



GULLANE VEST | SP317WV-225

Sleeveless wind sweater vest constructed of 100% merino wool. Model offers stretch lining, and banded cuffs and bottom. [SW0059]



095
HEATHER
GREY



400
NAVY



470
AZURE

SKU	S	M	L	XL	2XL
SP317WV-225-095					
SP317WV-225-400					
SP317WV-225-470					



LUKE | SP365BH-225

Long sleeve boucle hoodie constructed with a luxurious cashmere blend. Model offers set-in shoulder construction, and banded cuffs and bottom. [SW0589]



001
BLACK



400
NAVY



424
DENIM



526
MERLOT

SKU	S	M	L	XL	2XL
SP365BH-225-001					
SP365BH-225-400					
SP365BH-225-424					
SP365BH-225-526					



ALEX | SP2001LS-MSP

Long sleeve lightweight solid 1/4 zip pullover features open cuffs and bottom. Model is constructed using a french terry fabric that offers four-way stretch, raglan sleeves, storm flap and a rubber thistle logo on the back collar. [LR0056]



001
BLACK

008
GRANITE



400
NAVY

440
ROYAL

SKU	S	M	L	XL	2XL
SP2001LS-MSP-001					
SP2001LS-MSP-008					
SP2001LS-MSP-400					
SP2001LS-MSP-440					



FAIR ISLE HOODIE | SP201H-225

Long sleeve fair isle hoodie pullover with our signature performance fleece. Model features raglan shoulder construction, open cuffs and bottom, and embroidered thistle logo on wearer's right wrist. [LR0527]



001
BLACK

400
NAVY

526
MERLOT

SKU	S	M	L	XL	2XL
SP201H-225-001					
SP201H-225-400					
SP201H-225-526					



LOUIE | SP209-225

Long sleeve mid-weight 1/4 zip pullover constructed with our signature performance fleece. Model features raglan sleeve construction, four-way stretch, with open cuffs and bottom. [LR0576]

335
JADE406
IRIS424
DENIM470
AZURE498
COASTAL526
MERLOT734
HEATHER
NECTAR

SKU	S	M	L	XL	2XL
SP209-225-335					
SP209-225-406					
SP209-225-424					
SP209-225-470					
SP209-225-498					
SP209-225-526					
SP209-225-734					

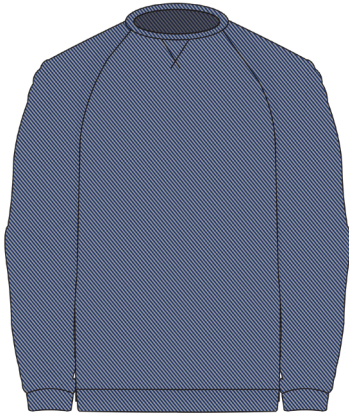


CALEB | SP2520-225

Expedition series, long sleeve full zip jacket. Model features full two-way center front zipper, droptail hem, contrast storm flap with reflective DR heat seal logo and two lower front pockets. Model offers diamond stitching, mesh camouflage interior lining and is DWR coated. [LR00551]

051
CHARCOAL424
DENIM

SKU	S	M	L	XL	2XL
SP2520-225-051					
SP2520-225-424					



FLYNN | SP2618C-225

Long sleeve mid-weight crewneck pullover. Model built with mélangé twill fabrication, raglan sleeve construction with an embroidered thistle logo on back yoke, and banded cuffs and bottom. [LR0595]



001
BLACK



095
HEATHER
GREY



400
NAVY

SKU	S	M	L	XL	2XL
SP2618C-225-001					
SP2618C-225-095					
SP2618C-225-400					



JONAS | SP2622-225

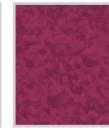
Full zip sherpa vest with two-way center front zipper and two lower welted front pockets. Model includes chest pocket with zipper closure with corresponding flat knit accent panels on shoulders and wearer's left chest pocket. [LR0059]



001
BLACK



424
DENIM



526
MERLOT

SKU	S	M	L	XL	2XL
SP2622-225-001					
SP2622-225-424					
SP2622-225-526					



FRASER | SP6020-225

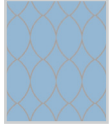
Long sleeve hoodie pullover offers a new tri-blend jacquard fabric. Model features set-in shoulder construction, set-on kangaroo pocket, banded cuffs and bottom, and embroidered thistle logo on wearer's right wrist. [LR0058]



001
BLACK



015
FOG

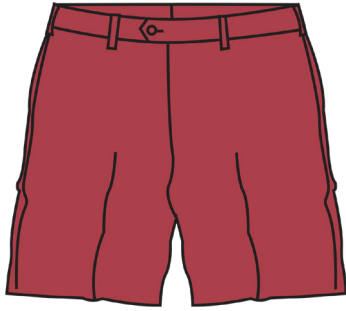


498
COASTAL



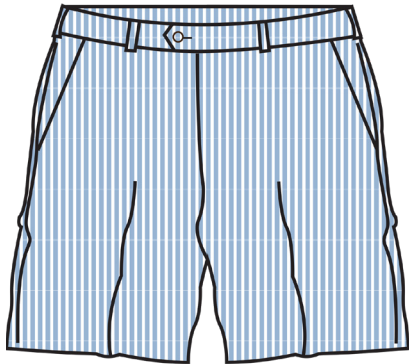
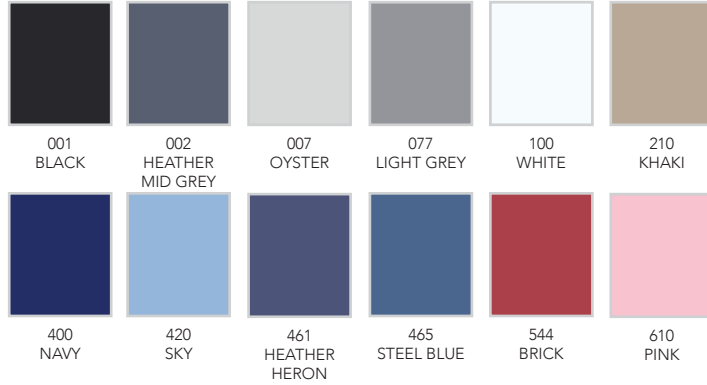
526
MERLOT

SKU	S	M	L	XL	2XL
SP6020-225-001					
SP6020-225-015					
SP6020-225-498					
SP6020-225-526					



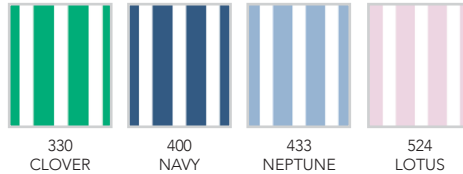
THE WALKER II | DR702-MSP

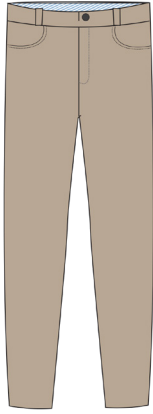
Flat front solid, performance walk shorts. Constructed of "Thistle Stretch" fabric that delivers breathable four-way stretch with quick dry properties. Engineered with 8.5" inseam, deep front pockets, hidden coin pocket, and scorecard back pocket. [BT0045]



SEERSUCKER STRETCH WALKER II SHORT | DR704-MSP

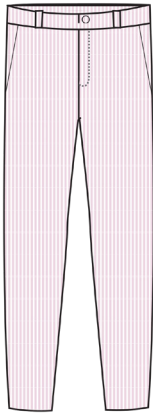
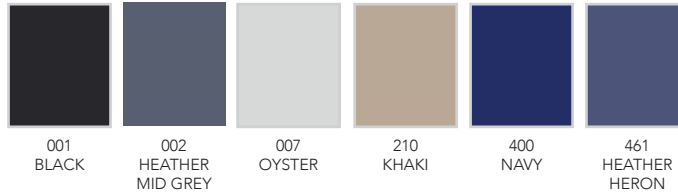
Flat front solid, performance walk shorts. Constructed of "Thistle Stretch" fabric that delivers breathable four-way stretch with quick dry properties. Engineered with 8.5" inseam, deep front pockets, hidden coin pocket, and scorecard back pocket. [BT0045]





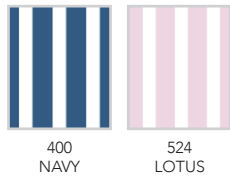
WESTERN POCKET PANT | DR754-MSP

Constructed of "Thistle Stretch" fabric that delivers breathable four-way stretch with quick dry properties. Designed with a comfortable modern fit, and the ideal weight for all weather conditions. [BT0047]



SEERSUCKER PERFORMANCE PANTS | DR756-MSP

Constructed of "Thistle Stretch" fabric that delivers breathable four-way stretch with quick dry properties. Designed with **flat front** styling, a comfortable modern fit, and the ideal weight for all weather conditions. [BT0047]



SOLID



SP016SC-MSP-100
SP159-MSP-100
SP016K-225-100
WHITE

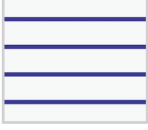


SP2001LS-MSP-440
ROYAL

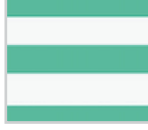


SP016K-225-470
AZURE

STRIPES



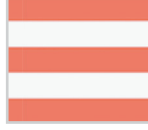
SP7569-225-100
WHITE/ROYAL



SP019-225-335
JADE/WHITE



SP019-225-470
AZURE/WHITE



SP019-225-734
NECTAR/WHITE



SP151-225-335
JADE/AZURE/
WHITE



SP151-225-470
AZURE/JADE/
WHITE



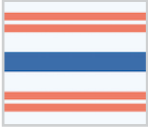
SP151-225-734
NECTAR/AZURE/
WHITE



SP565A-225-100
WHITE/AZURE/
JADE



SP565-225-470
AZURE/WHITE/
NECTAR

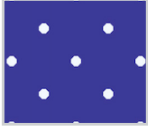


SP2829B-225-100
WHITE/AZURE/
NECTAR



SP2829-225-470
AZURE/JADE/
WHITE

PRINTS



SPP307-225-440
ROYAL/WHITE



SPP020-225-335
JADE/WHITE



SPP020-225-470
AZURE/WHITE



SPP021A-225-100
WHITE/AZURE/
NECTAR



SPP021-225-335
JADE/AZURE/
GRANITE



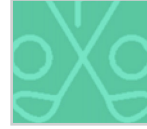
SPP022B-225-100
WHITE/NECTAR/
AZURE



SPP022-225-335
JADE/AZURE/
WHITE



SPP022-225-470
AZURE/NECTAR/
JADE



SPP023-225-335
JADE



SPP023-225-470
AZURE



SPP023-225-734
NECTAR



SPP024B-225-100
WHITE/NECTAR



SPP024-225-470
AZURE/WHITE



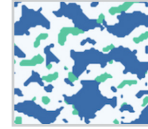
SPP024A-225-470
AZURE/JADE



SPP025-225-335
JADE/AZURE



SPP025-225-470
AZURE/WHITE



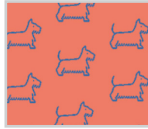
SPP026A-225-100
WHITE/AZURE/
JADE



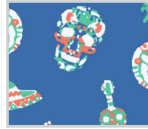
SPP026-225-470
AZURE/NECTAR/
WHITE



SPP027-225-470
AZURE/JADE



SPP027-225-734
NECTAR/AZURE

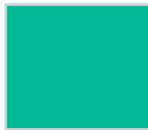


SPP028-225-470
AZURE MULTI

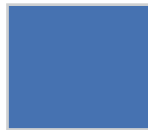
LAYERS



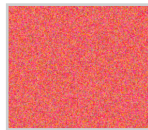
SP2618C-225-095
HEATHER GREY



SP209-225-335
JADE

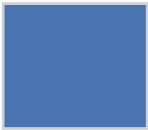


SP209-225-470
AZURE



SP209-225-734
NECTAR

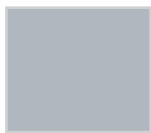
SWEATERS



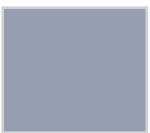
SP317W-225-470
SP317WV-225-470
AZURE

MERLOT | DENIM | SLATE

SOLID



SP2001LS-MSP-008
GRANITE



SP016K-225-044
SP076MLS-225-044
SLATE



SP159-MSP-056
STEEL GREY



SP016SC-MSP-100
SP159-MSP-100
SP016K-225-100
WHITE



SP159-MSP-465
STEEL BLUE



SP016K-225-526
SP076MLS-225-526
MERLOT

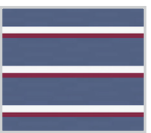
STRIPES



SP019-225-424
DENIM/WHITE



SP019-225-526
MERLOT/WHITE



SP151-225-424
DENIM/WHITE/
MERLOT



SP151-225-526
MERLOT/DENIM/
WHITE



SP565-225-044
SLATE/DENIM/
WHITE



SP565-225-424
DENIM/MERLOT/
WHITE



SP2829-225-100
WHITE/DENIM/
MERLOT



SP2829-225-526
MERLOT/SLATE/
WHITE

PRINTS



SPP020-225-044
SLATE/WHITE



SPP020-225-526
MERLOT/WHITE



SPP021-225-100
WHITE/SLATE/
MERLOT



SPP021-225-526
MERLOT/DENIM/
SLATE



SPP022A-225-100
WHITE/MERLOT/
DENIM



SPP022-225-424
DENIM/WHITE/
SLATE



SPP023-225-424
DENIM



SPP023-225-526
MERLOT



SPP024-225-100
WHITE/DENIM



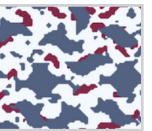
SPP024A-225-100
WHITE/MERLOT



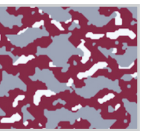
SPP025-225-424
DENIM/WHITE



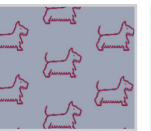
SPP025-225-526
MERLOT/WHITE



SPP026-225-100
WHITE/DENIM/
MERLOT



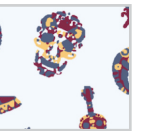
SPP026-225-526
MERLOT/SLATE/
WHITE



SPP027-225-044
SLATE/MERLOT



SPP027-225-424
DENIM/WHITE



SPP028-225-100
WHITE MULTI

LAYERS



SP2520-225-051
CHARCOAL



SP2618C-225-095
HEATHER GREY



SP209-225-424
SP2520-225-424
SP2622-225-424
DENIM



SP209-225-526
SP6020-225-526
SP2622-225-526
MERLOT



SP201H-225-526
MERLOT

SWEATERS



SP365BH-225-424
DENIM



SP365BH-225-526
MERLOT

SOLID



SP016SC-MSP-001
SP159-MSP-001
SP016K-225-001
BLACK



SP016SC-MSP-100
SP159-MSP-100
SP016K-225-100
WHITE



SP016K-225-406
SP076MLS-225-406
IRIS



SP016K-225-498
COASTAL

STRIPES



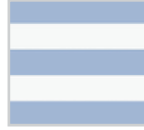
SP7569-MSP-001
BLACK/WHITE



SP019-225-001
BLACK/WHITE



SP019-225-406
IRIS/WHITE



SP019-225-498
COASTAL/WHITE



SP151-225-001
BLACK/IRIS/WHITE



SP151-225-406
IRIS/MARIGOLD/
BLACK



SP565-225-100
WHITE/BLACK/IRIS



SP565-225-406
IRIS/WHITE/
COASTAL



SP2829-225-001
BLACK/IRIS/
MARIGOLD



SP2829-225-406
IRIS/COASTAL/
MARIGOLD

PRINTS



SPP307-225-001
BLACK/WHITE



SPP020-225-001
BLACK/WHITE



SPP020-225-406
IRIS/WHITE



SPP021-225-001
BLACK/IRIS/
MARIGOLD



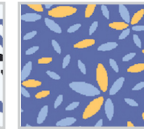
SPP021-225-498
COASTAL/IRIS/
MARIGOLD



SPP022-225-001
BLACK/IRIS/
COASTAL



SPP022-225-100
WHITE/BLACK/IRIS



SPP022-225-406
IRIS/MARIGOLD/
COASTAL



SPP023-225-001
BLACK



SPP023-225-406
IRIS



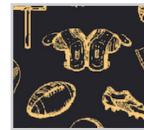
SPP023-225-498
COASTAL



SPP024-225-001
BLACK/COASTAL



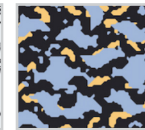
SPP024-225-406
IRIS/MARIGOLD



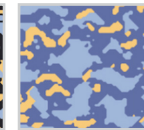
SPP025-225-001
BLACK/MARIGOLD



SPP025-225-100
WHITE/BLACK



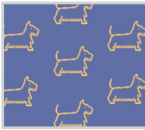
SPP026-225-001
BLACK/COASTAL/
MARIGOLD



SPP026-225-406
IRIS/COASTAL/
MARIGOLD



SPP027-225-001
BLACK/COASTAL



SPP027-225-406
IRIS/MARIGOLD



SPP028-225-001
BLACK MULTI

LAYERS



SP2001LS-MSP-001
BLACK



SP201H-225-001
BLACK



SP2618C-225-001
BLACK



SP6020-225-001
BLACK



SP2622-225-001
BLACK



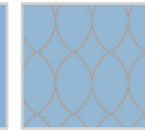
SP6020-225-015
FOG



SP209-225-406
IRIS



SP209-225-498
COASTAL



SP6020-225-498
COASTAL

SWEATERS



SP317W-225-001
SP317WV-225-001
BLACK



SP365BH-225-001
BLACK

Order / Logo Notes:

Logo Placement Options:

- Left Chest
- Left Sleeve
- Left Collar
- Right Chest
- Right Sleeve
- Right Collar
- Yoke
- No Logo

Logo Colorway Options:

- Color Coordinate
- Club Colors
- Tonal Light
- Tonal Dark
- Contrast
- Tone on Tone

For more information visit: www.donaldross.com/green-grass/

Contact your sales representative or contact customer service

Via Phone: 910-944-3114

Via Email: customerservice@donaldross.com

Donald Ross

Tournament Program



Let our DR Team handle your tournament needs!

Benefits

- No Inventory Commitment
 - One Price Per Player
- All Shipping Costs Included
- Complimentary Donald Ross Shopping Bags
- Fully Serviced by Donald Ross Representatives
 - One Invoice

Donald Ross Tournament Program

Event Options

Microsite | Customized E-Commerce Shopping Experience

A custom microsite built for your participants to select their gift within a set event budget. Our Team guides you through the process from start to finish.

Drop Ship | Customized Shopping Experience

Our Team is on-site to administrate a hassle-free experience for your participants to choose their gift from a selection of product. Orders are taken and then shipped to the participants desired address in our special DR packaging.

All-inclusive pricing includes embroidery.

ThistleSpree | Full-Service Online Shopping Experience

An online shopping experience for participants to choose their gift. Ability to include multiple categories of product. Great for flexible budgeting and opportunity for overspend.

Giveaway | Full-Service Shopping Experience

A full-service shopping experience for your participants. Our Team is on-site to handle the gifting portion of your event. All-inclusive pricing includes all product, shipping, staffing, and Donald Ross gift bags.



Donald Ross

Tournament Program

Why choose Donald Ross for your event?

- One **ALL INCLUSIVE** price per player. This includes one logo, all shipping, alphabetical sorting and packaging, gift bags, and a dedicated DR Team Member to administer and service your event from start to finish.
- Power of the gift of choice – allow participants to choose their own gift
- Product selections tailored specifically to your event budget or needs
- Sport and Classic product offered to accommodate your participants' fit needs
- Your event order is given priority – unmatched turnaround time
 - Exceptional customer service
 - Simplified billing – ONE invoice



For more information, please contact us via:

Email: events@donaldross.com

or

Phone: (910) 944-3114

